

 **BOEING**
COMPONENT
MAINTENANCE MANUAL

TO: ALL HOLDERS OF BATTERY/STANDBY POWER PANEL ASSEMBLY COMPONENT MAINTENANCE
MANUAL 24-33-71

REVISION NO. 20 DATED JUL 01/03

HIGHLIGHTS

Pages which have been added or revised are outlined below together with the highlights of the revision. Remove and insert the affected pages as listed and enter Revision No. and date on the Record of Revision Sheet.

CHAPTER/SECTION

AND PAGE NO.

DESCRIPTION OF CHANGE

TITLE PAGE

Incorporated SB 233N3211-24-02, Rev. 1.

1

TR & SB RECORD

1

101-102,104-107,

109,111,121,123

1005-1013,1018-1021,

1025-1048

TR & SB RECORD

Incorporated TR 24-5.

1

24-33-71

HIGHLIGHTS

01.1

Page 1

Jul 01/03

BATTERY/STANDBY POWER PANEL ASSEMBLY, M10062

PART NUMBERS 233N3211-8,-11,-15,-19,-20,
-24 THRU -27,-29 THRU
-35,-1008,-1011,-1015,
-1019,-1020,-1024 THRU
-1027,-1029 THRU -1035,
-1312 THRU -1319
233T3100-70,-137,-156,-157,
-218,-219,-232,-233

COMPONENT MAINTENANCE MANUAL
WITH
ILLUSTRATED PARTS LIST

24-33-71

TITLE PAGE

Page 1

Jul 01/03

01.1



REVISION RECORD

- Retain this record in front of manual. On receipt of revision, insert revised pages in the manual, and enter revision number, date inserted and initial.

REVISION NUMBER	REVISION DATE	DATE FILED	BY	REVISION NUMBER	REVISION DATE	DATE FILED	BY

TEMPORARY REVISION AND SERVICE BULLETIN RECORD

BOEING SERVICE BULLETIN	BOEING TEMPORARY REVISION	OTHER DIRECTIVE	DATE OF INCORPORATION INTO MANUAL
233N3211-24-1 233N3211-24-1 233N3211-24-02 233N3211-24-02R1	24-2 24-3 24-5 (757) 24-5 (767)	PRR N52448 MC N2454-02 PRR N52532 PRR VDCN0005 PRR B11039 PRR N53033 PRR N53112 PRR 53112-1 PRR B11110-2 PRR 53112-2 PRR C12526-R4 PRR 54530-241S PRR B12901-10S	JUL 10/82 JUL 10/82 JUL 10/82 APR 10/83 OCT 10/83 JAN 10/84 JUL 10/85 JUL 10/85 JUL 10/85 JUL 10/85 JUL 10/85 JAN 10/86 NOV 01/01 NOV 01/01 NOV 01/01 NOV 01/01 JUL 01/03 JUL 01/03 JUL 01/03

24-33-71

TR & SB RECORD

01.1

Page 1

Jul 01/03

PAGE	DATE	CODE	PAGE	DATE	CODE
24-33-71			TESTING & TROUBLE SHOOTING		CONT.
TITLE PAGE			112	BLANK	
*1	JUL 01/03	01.1	*113	JUL 01/03	01.101
2	BLANK		114	BLANK	
REVISION RECORD			*115	JUL 01/03	01.101
1	JAN 01/89	01.1	116	BLANK	
2	BLANK		*117	JUL 01/03	01.101
TR & SB RECORD			118	BLANK	
*1	JUL 01/03	01.1	*119	JUL 01/03	01.101
2	BLANK		120	BLANK	
LIST OF EFFECTIVE PAGES			*121	JUL 01/03	01.1
*1	JUL 01/03	01	122	BLANK	
THRU LAST PAGE			*123	JUL 01/03	01.1
CONTENTS			*124	BLANK	
1	NOV 01/01	01.1	REPAIR-GENERAL		
2	BLANK		601	JUL 01/02	01.1
INTRODUCTION			602	BLANK	
1	APR 01/91	01.1	ILLUSTRATED PARTS LIST		
2	BLANK		1001	JAN 01/89	01.1
DESCRIPTION & OPERATION			1002	OCT 01/92	02.1
1	APR 01/91	01.1	1003	JUL 01/01	01.1
2	BLANK		1004	JUL 01/01	01.1
TESTING & TROUBLE SHOOTING			*1005	JUL 01/03	01.1
*101	JUL 01/03	01.1	*1006	JUL 01/03	01.1
*102	JUL 01/03	01.1	*1007	JUL 01/03	01.1
103	NOV 01/01	01.1	*1008	JUL 01/03	01.1
*104	JUL 01/03	01.1	*1009	JUL 01/03	01.1
*105	JUL 01/03	01.1	*1010	JUL 01/03	01.1
*106	JUL 01/03	01.1	*1011	JUL 01/03	01.1
*107	JUL 01/03	01.1	*1012	JUL 01/03	01.1
108	BLANK		*1013	JUL 01/03	01.1
*109	JUL 01/03	01.1	*1014	JUL 01/03	01.101
110	BLANK		*1015	JUL 01/03	01.101
*111	JUL 01/03	01.1	*1016	JUL 01/03	01.101
			*1017	JUL 01/03	01.101
			*1018	JUL 01/03	01.1
			*1019	JUL 01/03	01.1
			*1020	JUL 01/03	01.1
			*1021	JUL 01/03	01.1
			*1022	JUL 01/03	01.101
			*1023	JUL 01/03	01.101

* = REVISED, ADDED OR DELETED

24-33-71

EFFECTIVE PAGES
CONTINUED Page 1
01 Jul 01/03

PAGE	DATE	CODE	PAGE	DATE	CODE
ILLUSTRATED PARTS LIST		CONT.			
*1024	JUL 01/03	01.101			
*1025	JUL 01/03	01.101			
*1026	JUL 01/03	01.1			
*1027	JUL 01/03	01.1			
*1028	JUL 01/03	01.101			
*1029	JUL 01/03	01.1			
*1030	JUL 01/03	01.1			
*1031	JUL 01/03	01.1			
*1032	JUL 01/03	01.1			
*1033	JUL 01/03	01.1			
*1034	JUL 01/03	01.1			
*1035	JUL 01/03	01.1			
*1036	JUL 01/03	01.1			
*1037	JUL 01/03	01.1			
*1038	JUL 01/03	01.1			
*1039	JUL 01/03	01.1			
*1040	JUL 01/03	01.1			
*1041	JUL 01/03	01.1			
*1042	JUL 01/03	01.1			
*1043	JUL 01/03	01.1			
*1044	JUL 01/03	01.1			
*1045	JUL 01/03	01.1			
*1046	JUL 01/03	01.1			
*1047	JUL 01/03	01.1			
*1048	JUL 01/03	01.1			

* = REVISED, ADDED OR DELETED

24-33-71

EFFECTIVE PAGES
 LAST PAGE Page 2
 01 Jul 01/03

TABLE OF CONTENTS

<u>Paragraph Title</u>	<u>Page</u>
Description and Operation	1
Testing and Trouble Shooting.	101
Disassembly*[1]
Cleaning.*[1]
Check*[1]
Repair.	601
Assembly.*[1]
Fits and Clearances (not applicable).	
Special Tools, Fixtures, and Equipment.*[2]
Illustrated Parts List.	1001

*[1] Use applicable procedures in S0PM 20-11-05 and standard industry practices.

*[2] Special instructions not required.

INTRODUCTION

The instructions in this manual supply the data necessary to do the maintenance functions together with the test, trouble shooting, and replacement of defective components.

This manual is divided into different parts:

- | | |
|---|-----------------------------|
| 1. Title Page | 4. List of Effective Pages |
| 2. Record of Revisions | 5. Table of Contents |
| 3. Temporary Revisions &
Service Bulletin Record | 6. Introduction |
| | 7. Procedures and IPL Parts |

Refer to the Table of Contents for the page location of the applicable parts.

All dimensions, measures, quantities and weights used in the manual are in English units. When metric equivalents are given they will be in the parentheses that follow the English units.

The Illustrated Parts List (IPL) is used as shown in the introduction of that part.

Design changes, optional parts, configuration differences and Service Bulletin modifications cause different part numbers. These part numbers are identified in the IPL with an alphabetical character added to the end of the basic item number. The new item number is referred to as an alpha-variant. Through the manual, IPL basic item numbers also apply to alpha-variants unless shown differently.

Verification:

Testing/TS Oct 29/82

24-33-71

INTRODUCTION

01.1

Page 1

Apr 01/91

BATTERY/STANDBY POWER PANEL ASSEMBLY M10062

DESCRIPTION AND OPERATION

1. Description

- A. The battery/standby power panel assembly has a pushbutton switch, a rotary switch and indicator lights installed on a baseplate assembly. A wire bundle assembly connects all electrical components with a connector on a bracket which is attached to the baseplate by standoffs.

24-33-71

DESCRIPTION & OPERATION

01.1

Page 1

Apr 01/91

TESTING AND TROUBLE SHOOTING

1. Test Equipment

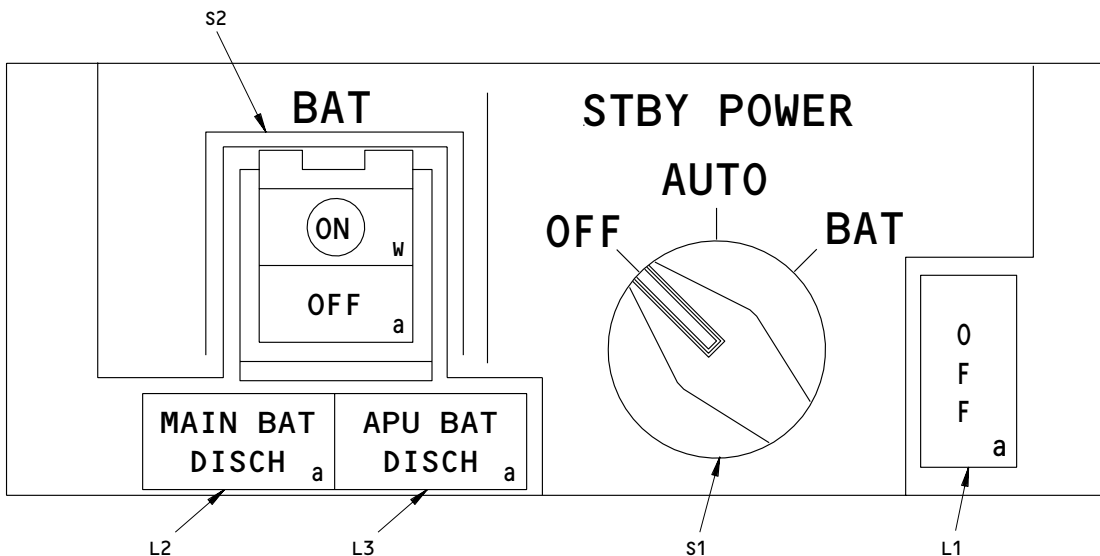
- A. Multimeter: Any model in the Simpson 260 series of multimeters/VOMs or equivalent.
- B. Power supplies: 28 vdc, 0.50 amp.
5 vac, 400 Hz, 0.50 amp.
- C. Test connector: BACC45FT20-41S (Boeing breakout box A33003-2 and cable A33003-47 may be used)

2. Functional Test

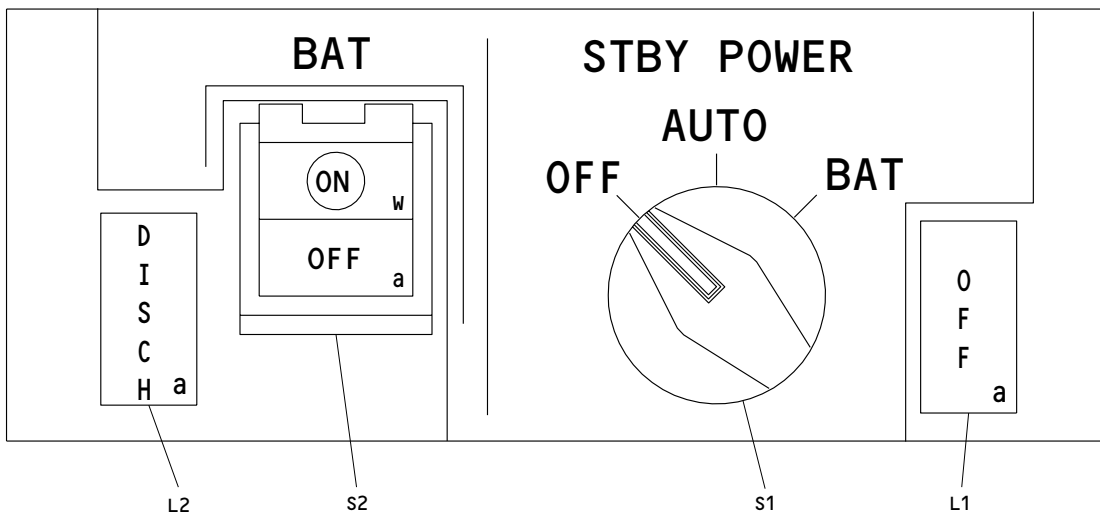
- A. Connect test connector to J2.
- B. Do test steps given in Fig. 102. Component locations are shown in Fig. 101.

NOTE: STANDBY POWER switch, S1, on certain panels must be pressed to turn to OFF position.

24-33-71



233N3211-11,-20,-26,-30,-31,-35,-1011,-1020,-1026,
 -1030,-1031,-1035,-1313,-1315,-1317
 233T3100-157,-219,-233



233N3211-8,-15,-19,-25,-27,-29,-32,-33,-34,-1008,
 -1015,-1019,-1025,-1027,-1029,-1032,-1033,
 -1034,-1312,-1314,-1316,-1318,-1319
 233T3100-70,-137,-156,-218,-232

Component Locations
 Figure 101

24-33-71

TEST PROCEDURE	NECESSARY RESULTS			COMPONENT EXAMINED	
Measure continuity (3 ohms max) or open (100k min) at given pins.	<u>S2 On</u>		<u>S2 Off</u>	S2	
	J2-23 to J2-14	Con	Open		
	J2-19 to J2-21	Con	Open		
	J2-19 to J2-25	Open	Con		
	J2-8 to J2-15	Con	Open		
	J2-24 to J2-16	Open	Con		
	J2-24 to J2-18	Con	Open		
		<u>S1 (OFF)</u>	<u>S1 (AUTO)</u>	<u>S1 (BAT)</u>	S1
	J2-12 to J2-13	Con	Con	Open	
	J2-10 to J2-11	Con	Open	Open	
	J2-9 to J2-11	Open	Con	Open	
	J2-11 to J2-6	Open	Open	Con	
	J2-32 to J2-33	Con	Con	Open	
	J2-32 to J2-34	Open	Open	Con	
J2-12 to J2-17	Open	Open	Con		
J2-22 to J2-20	Con	Con	Open		
J2-29 to J2-31	Open	Open	Con		
233N3211-11,-15,-20,-25 thru -27,-30 thru -32,-35,-1011,-1015,-1020,-1025 thru -1027,-1030 thru -1032,-1035					
J2-35 to J2-37	Open	Open	Con		
233N3211-11,-15,-25 thru -27,-31,-32,-1011,-1015,-1025 thru -1027,-1031,-1032					
J2-35 to J2-36	Con	Con	Open		

Functional Test
Figure 102 (Sheet 1)

24-33-71

TEST PROCEDURE	NECESSARY RESULTS			COMPONENT EXAMINED
<u>233N3211-20,-30,-35,-1020,-1030,-1035,-1313,-1315,-1317 and 233T3100-157,-219,-233</u>				
J2-35 to J2-36 J2-35 to J2-39	Open Con	Con Open	Open Open	
<u>233N3211-8,-19,-29,-33,-34,-1008,-1019,-1029,-1033,-1034,-1312,-1314,-1316,-1318,-1319 and 233T3100-70,-137,-156,-218,-232</u>				
	<u>S1 (OFF)</u>	<u>S1 (AUTO)</u>	<u>S1 (BAT)</u>	S1
J2-27 to J2-26	Open	Open	Con	
<u>ALL 233N3211 P/N</u>				
J2-2 to baseplate	Con			J1
J2-1 to center of lightplate connector	Con			J1
J2-1 to J2-2	Open			J1
Remove multimeter.				

Functional Test
 Figure 102 (Sheet 2)

24-33-71

TEST PROCEDURE	NECESSARY RESULTS	COMPONENT EXAMINED
<p><u>ALL 233N3211 P/N except as sepcified</u></p> <p>Connect pin J2-3 to +28v dc.</p> <p>Momentarily ground: J2-25 J2-4</p> <p>J2-7 J2-38</p> <p>Disconnect J2-3.</p>	<p>Lights are on (the two bulbs) only when specified below.</p> <p>Light must come on (the two bulbs). S2 OFF S2 OFF L2 DISCH L3 DISCH (-11,-20,-26,-30,-31,-35,-1011,-1020,-1026,-1030,-1031,-1035,-1313,-1315,-1317 and 233T3100-157,-219,-233 only) L2 DISCH L3 DISCH (-11,-20,-26,-30,-31,-35,-1011,-1020,-1026,-1030,-1031,-1035,-1313,-1315,-1317 and 233T3100-157,-219,-233 only)</p>	<p></p> <p>S2 S2 L2 L3</p> <p>L2 L3</p>

Functional Test
Figure 102 (Sheet 3)

24-33-71

TEST PROCEDURE	NECESSARY RESULTS	COMPONENT EXAMINED
Ground pin J2-3. Momentarily, connect +28v dc to: J2-25 J2-4 J2-7 J2-38	Light must stay off. S2 OFF S2 OFF L2 DISCH L3 DISCH (-11,-20,-26,-30,-31,-35,-1011,-1020,-1026,-1030,-1031,-1035,-1313,-1315,-1317 and 233T3100-157,-219,-233 only) L2 DISCH L3 DISCH (-11,-20,-26,-30,-31,-35,-1011,-1020,-1026,-1030,-1031,-1035,-1313,-1315,-1317 and 233T3100-157,-219,-233 only)	S2 S2 L2 L3 L2 L3
Disconnect power. Connect pin J2-14 to +28v dc. Momentarily ground: J2-4 J2-5	Light must come on (the two bulbs). L1 OFF L1 OFF	L1 L1
Disconnect J2-14.		
Ground pin J2-14. Momentarily connect 28v dc to: J2-4 J2-5	Light must stay off. L1 OFF L1 OFF	L1 L1
Remove all connections.		

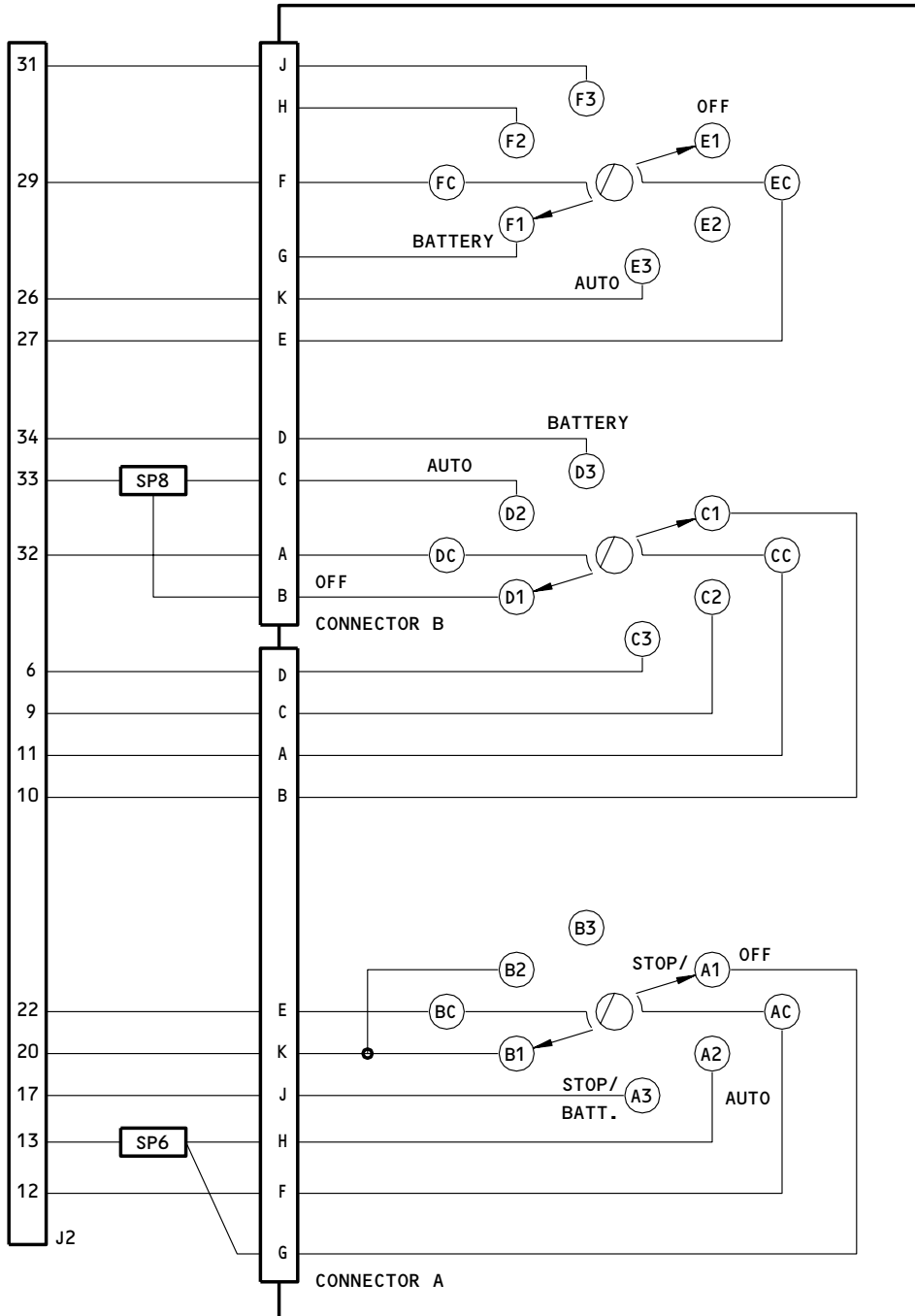
Functional Test
Figure 102 (Sheet 4)

24-33-71

TEST PROCEDURE	NECESSARY RESULTS	COMPONENT EXAMINED
Set S2 to ON. Connect 5v ac to J2-1. Connect 5v return to J2-2. Push in, release S2. Remove all connections.	Light must come on. S2 ON Indicator off.	L2

Functional Test
Figure 102 (Sheet 5)

24-33-71



S1 STANDBY POWER SWITCH

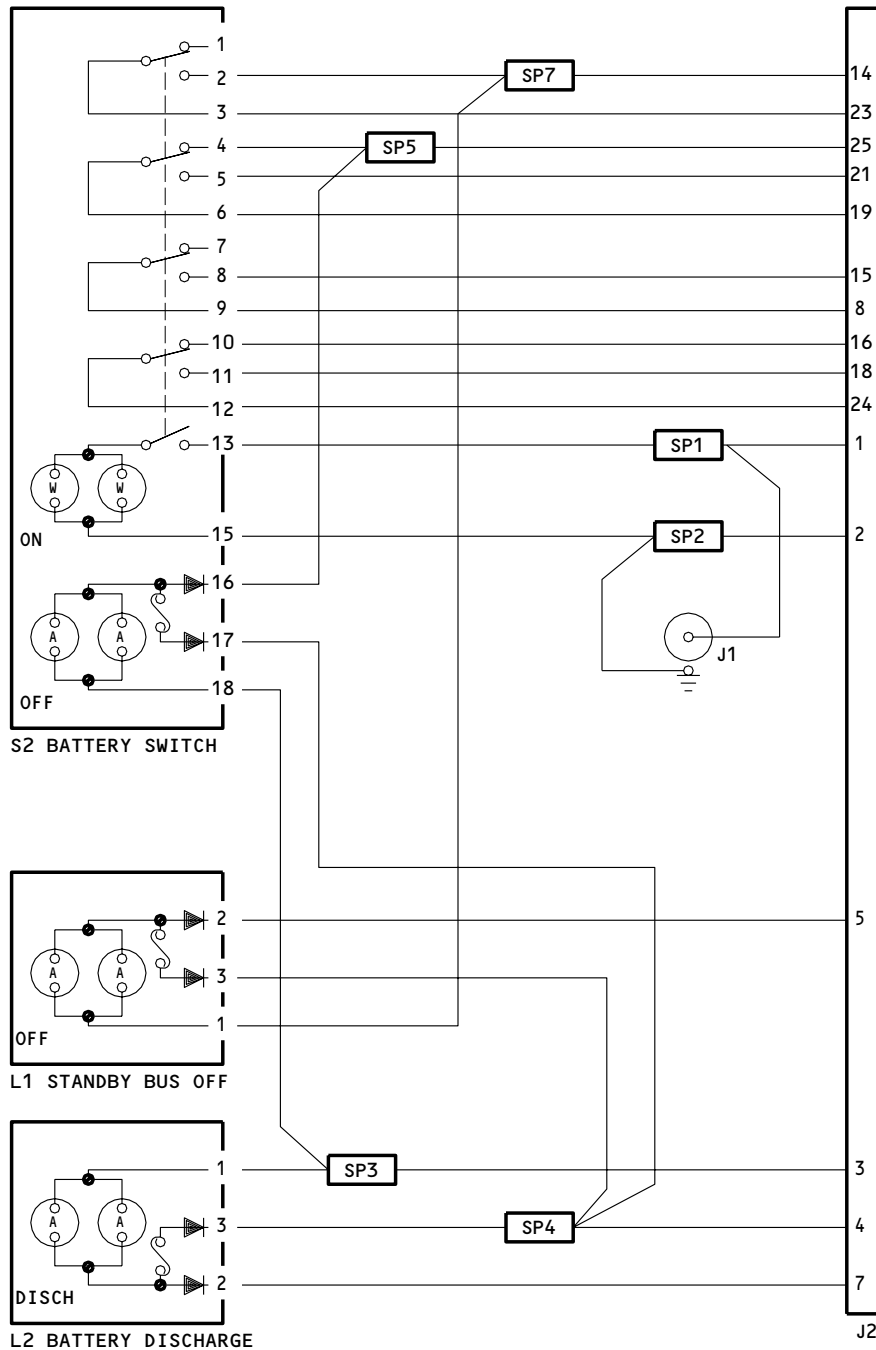
NOTE: ALL WIRE BMS 13-16, TYPE I, CLASS 1, SIZE 20

233N3211-8,-19,-29,-33,-34,-1008,-1019,-1029,-1033,
-1034,-1312,-1314,-1316,-1318,-1319
233T3100-70,-137,-156,-218,-232

Wiring Diagram
Figure 103 (Sheet 1)

24-33-71

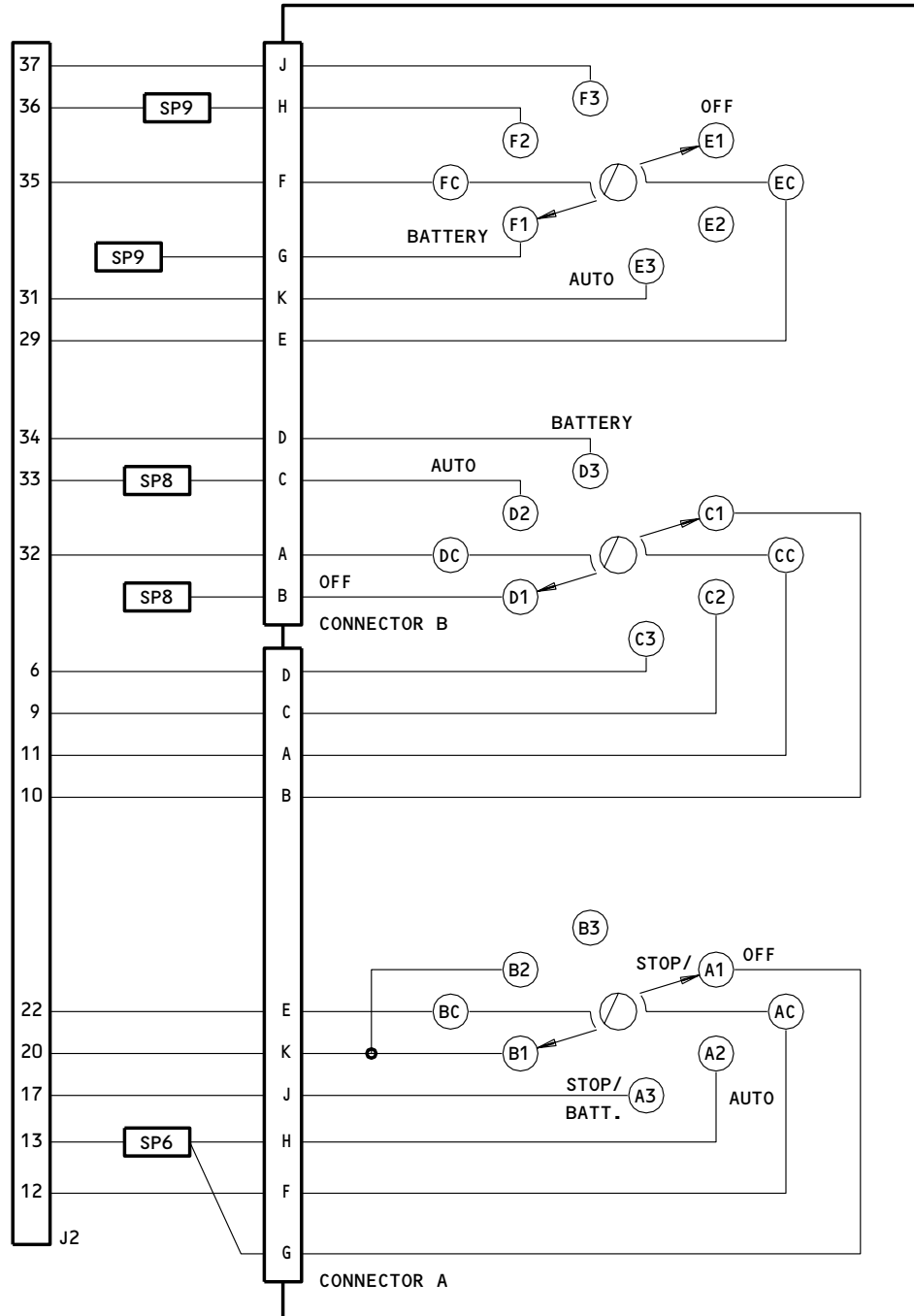
TESTING & TROUBLE SHOOTING
01.1 Page 109
Jul 01/03



233N3211-8,-19,-29,-33,-34,-1008,-1019,-1029,-1033,
-1034,-1312,-1314,-1316,-1318,-1319
233T3100-70,-137,-156,-218,-232

Wiring Diagram
Figure 103 (Sheet 2)

24-33-71



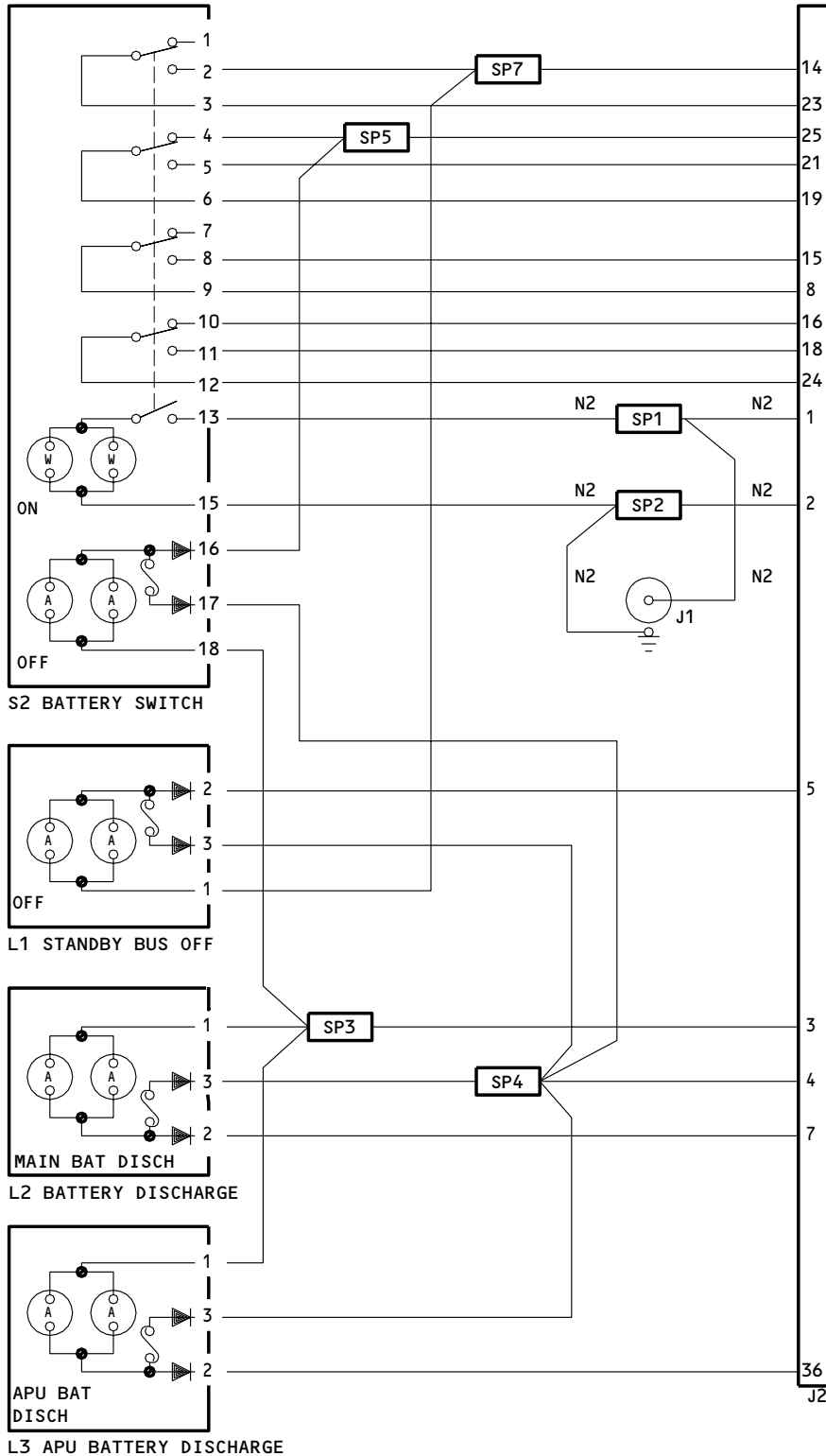
S1 STANDBY POWER SWITCH

NOTE: ALL WIRE BMS 13-16, TYPE I, CLASS 1, SIZE 20
SEPARATION: ALL WIRES S2 EXCEPT AS NOTED.
SEE REPAIR.

233N3211-11,-24,-26,-31,-1011,-1024,-1026,-1031 Wiring Diagram
Figure 104 (Sheet 1)

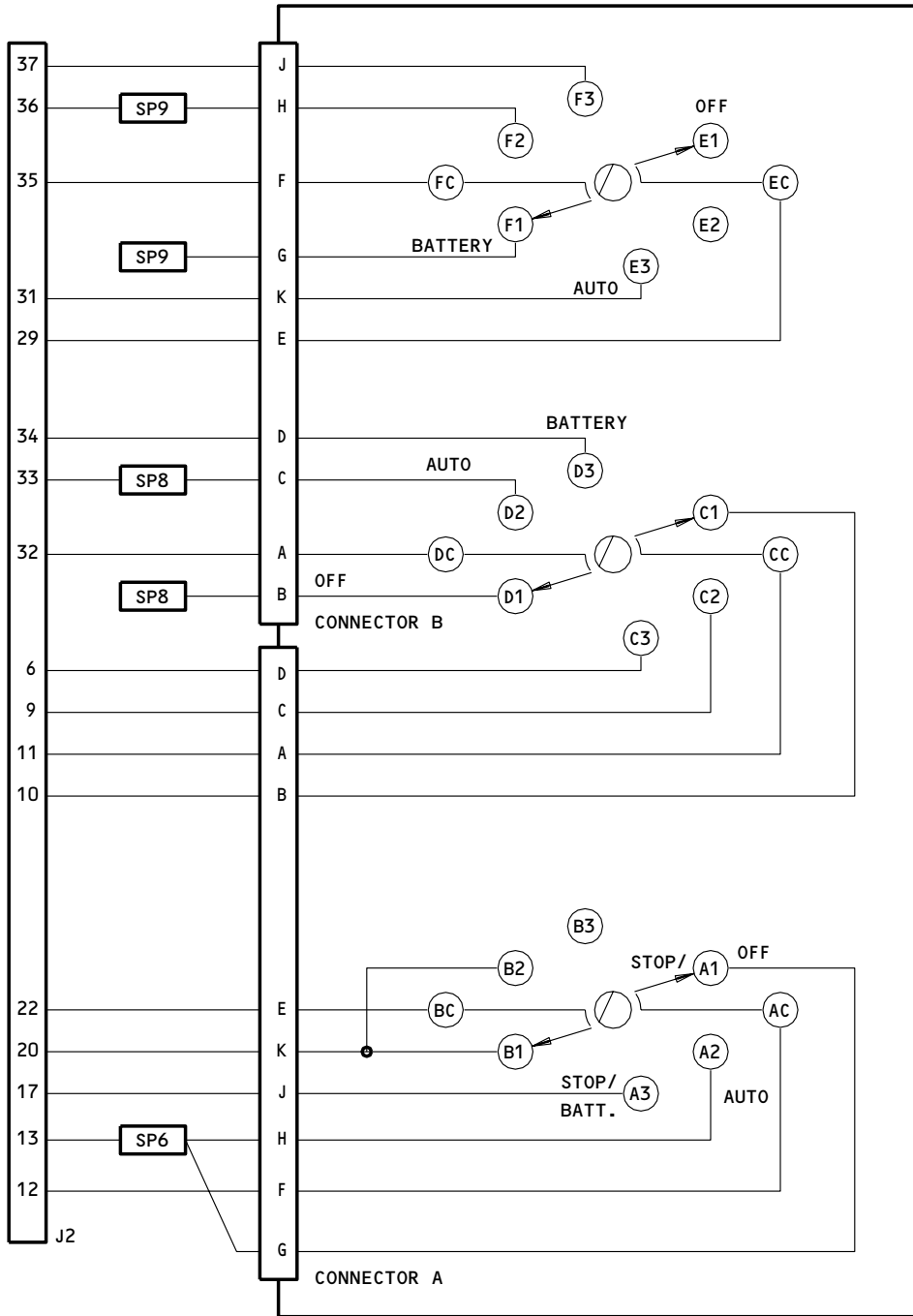
24-33-71

TESTING & TROUBLE SHOOTING
01.101 Page 113
Jul 01/03



233N3211-11,-24,-26,-31,-1011,-1024,-1026,-1031 Wiring Diagram
Figure 104 (Sheet 2)

24-33-71



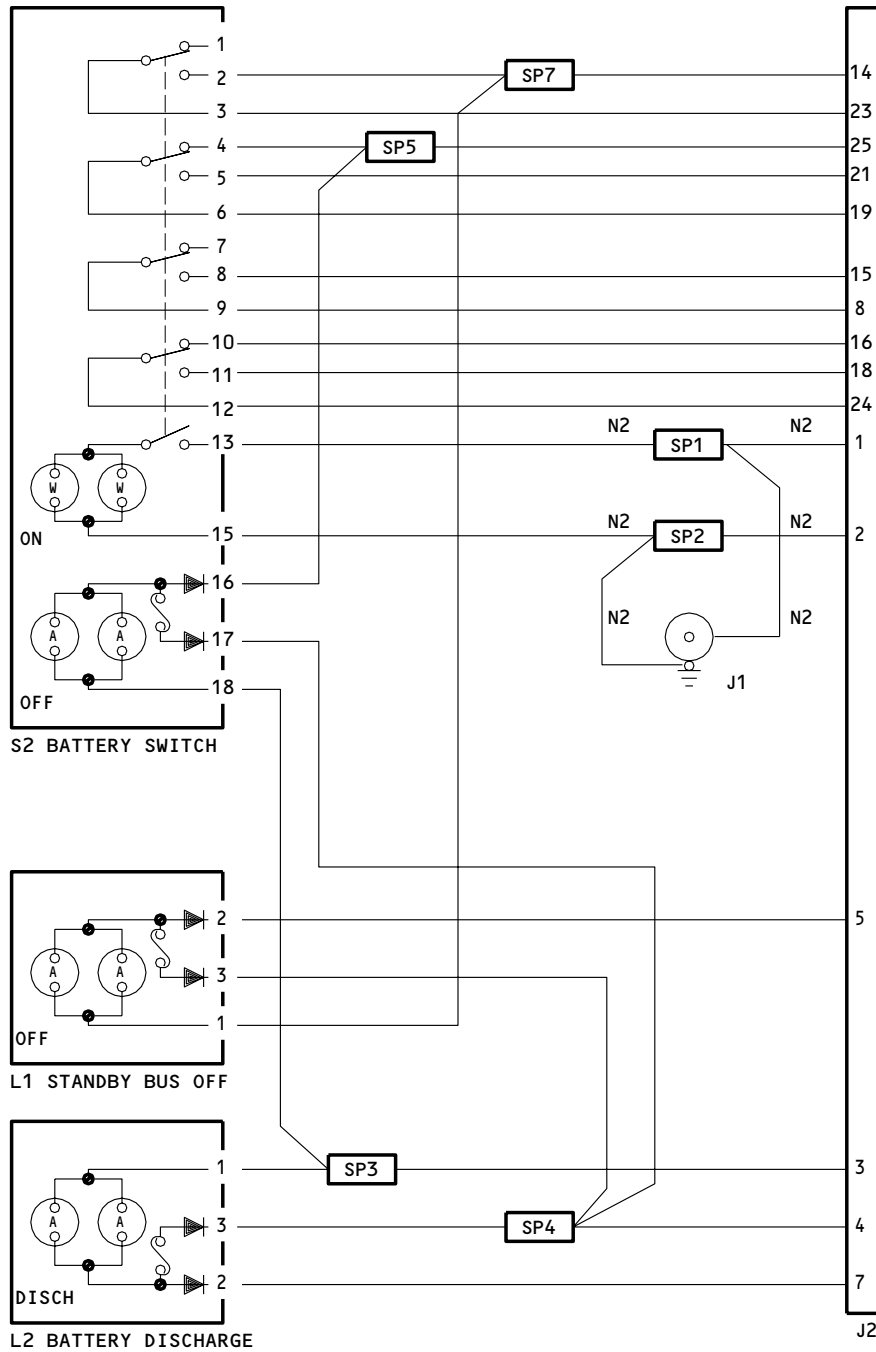
S1 STANDBY POWER SWITCH

NOTE: ALL WIRE BMS 13-16, TYPE I, CLASS 1, SIZE 20
SEPARATION: ALL WIRES S2 EXCEPT AS NOTED.
SEE REPAIR

233N3211-15,-25,-27,-32,-1015,-1025,-1027,-1032 Wiring Diagram
Figure 105 (Sheet 1)

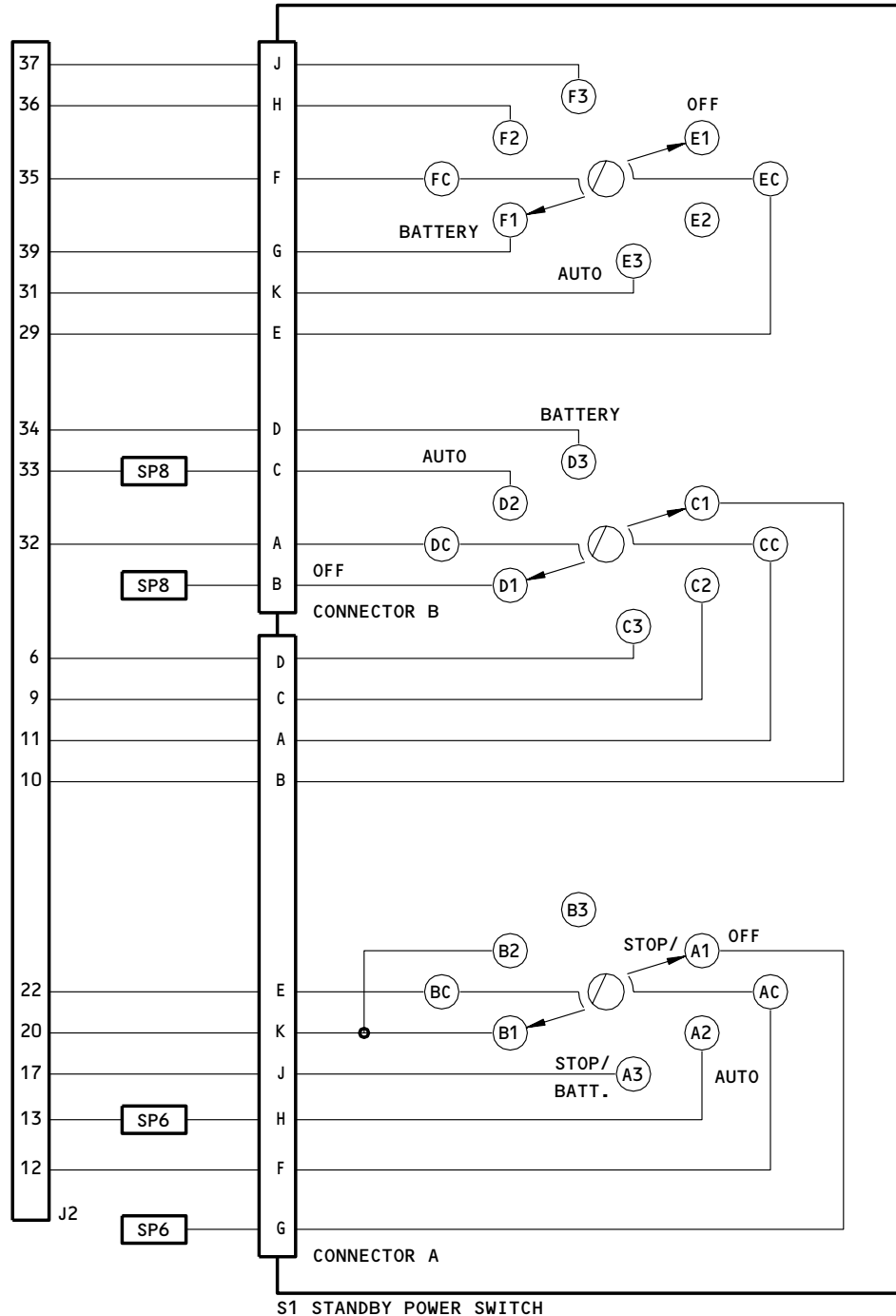
24-33-71

TESTING & TROUBLE SHOOTING
01.101 Page 117
Jul 01/03



233N3211-15,-25,-27,-32,-1015,-1025,-1027,-1032 Wiring Diagram
Figure 105 (Sheet 2)

24-33-71

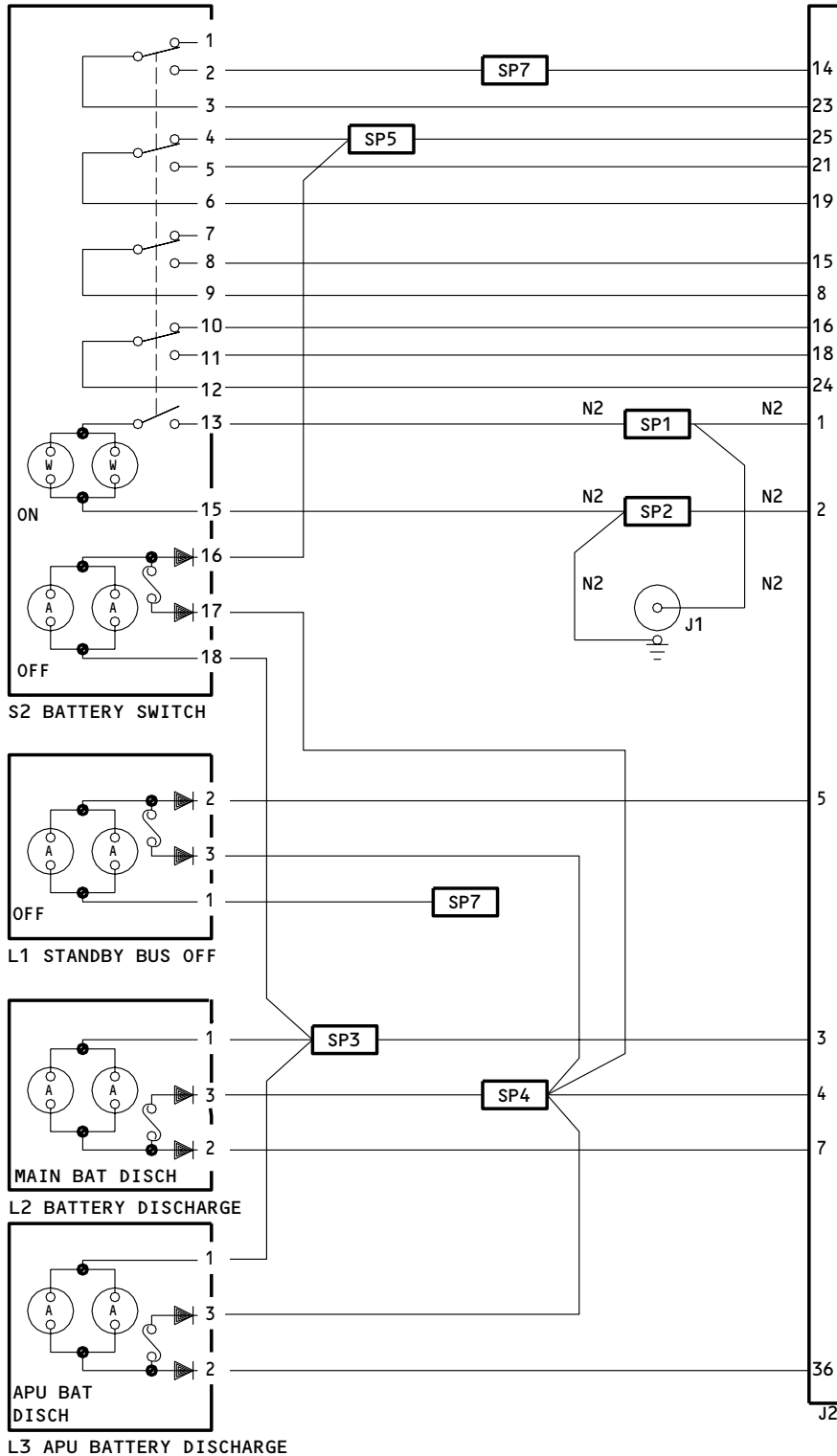


S1 STANDBY POWER SWITCH

NOTE: ALL WIRE BMS 13-48, TYPE I, CLASS 1, SIZE 20
SEPARATION: ALL WIRES S2 EXCEPT AS NOTED.
SEE REPAIR.

233N3211-20,-30,-35,-1020,-1030,-1035,-1313,-1315,-1317
233T3100-157,-219,-233
Wiring Diagram
Figure 106 (Sheet 1)

24-33-71



233N3211-20,-30,-35,-1020,-1030,-1035,-1313,-1315,-1317
233T3100-157,-219,-233

Wiring Diagram
Figure 106 (Sheet 2)

24-33-71

REPAIR

1. Materials

A. Varglas nonfray type H0 or HP sleeving (Varflex Corp., 512 W. Court Street, Rome, New York 13440).

2. To repair, use standard shop procedures and the instructions in 20-11-05 except for the special instruction which follows:

A. Wire categories are color-coded S2 (blue), and N2 (white). Maintain a minimum of 1/4-inch spacing between bundles of different categories. Use 63-9273-2 separators or Varglas nonfray type H0 or HP sleeving to make sure a correct separation is maintained.

B. When you replace the lighted pushbutton switch S2 (IPL Fig. 1, Items 10L and 10M), make sure that you use the switch with the letter "D" imprinted on the master module of the switch. The Korry part number of the master module with the configuration "D" marked is 13206-001.

ILLUSTRATED PARTS LIST

1. This section lists and illustrates replaceable or repairable component parts. The Illustrated Parts catalog contains a complete explanation of the Boeing part numbering system.

2. Indentures show parts relationships as follows:

Assembly

Detail Parts for Assembly

Subassembly

Attaching Parts for Subassembly

Detail Parts for Subassembly

Detail Installation Parts (Included only if installation parts may be returned to shop as part of assembly)

3. One use code letter (A, B, C, etc.) is assigned in the EFF CODE column for each variation of top assembly. All listed parts are used on all top assemblies except when limitations are shown by use code letter opposite individual part entires.

4. Letter suffixes (alpha-variants) are added to item numbers for optional parts, Service Bulletin modification parts, configuration differences (except left- and right-hand parts), product improvement parts, and parts added between two sequential item numbers. The alpha-variant is not shown on illustrations when appearance and location of all variants of the part are the same.

5. Service Bulletin modifications are shown by the notations PRE SB XXXX and POST SB XXXX.

A. When a new top assembly part number is assigned by Service Bulletin, the notations appear at the top assembly level only. The configuration differences at detail part level are then shown by use code letter.

B. When the top assembly part number is not changed by the Service Bulletin, the notations appear at the detail part level.

6. Parts Interchangeability

Optional
(OPT)

The parts are optional to and interchangeable with other parts having the same item number.

Supersedes, Superseded By
(SUPSDS, SUPSD BY)

The part supersedes and is not interchangeable with the original part.

Replaces, Replaced By
(REPLS, REPLD BY)

The part replaces and is interchangeable with, or is an alternate to, the original part.

24-33-71

ILLUSTRATED PARTS LIST

01.1

Page 1001

Jan 01/89

7. Use substitute parts only as specified in the drawing 280T1001,
Airplane Electrical/Electronic Parts Substitution Drawing.

24-33-71

ILLUSTRATED PARTS LIST
02.1 Page 1002
Oct 01/92

VENDORS

- 05617 IDD AEROSPACE CORP
 18225 NORTHEAST 76TH STREET PO BOX 97056
 REDMOND, WASHINGTON 98073-9756
 FORMERLY FARWEST ELEC INC; FORMERY IN BELLEVUE, WA;
 FORMERLY BELL IND FARWEST MFG DIV; FORMERLY BELL IND
 ILLUMINATED DISPLAYS DIV
- 12324 DUPREE INC STAKE FASTENER CO
 14395 RAMONA PO BOX 1797
 CHINO, CALIFORNIA 91708
 FORMERLY DUPREE MFG CO IN SOUTH EL MONTE, CALIFORNIA
 FORMERLY STAKE FASTENER CO DIV OF DUPREE INC
- 15653 FAIRCHILD FASTENERS KAYNAR PRODUCTS DIV
 800 S STATE COLLEGE BLVD
 FULLERTON, CALIFORNIA 92831-3001
 FORMERLY VK6405 MICRODOT AEROSP LTD; FORMERLY KAYNAR TECH
 KAYNAR DIV
- 60119 MONADNOCK CO THE
 18301 ARENTH AVENUE PO BOX 1222
 CITY OF INDUSTRY, CALIFORNIA 91749
 FORMERLY UNITED CARR FASTENER CORP VB0051 VB0056 VB0076
 FORMERLY TRW ELECTRONIC COMPONENTS CINCH-MONADNOCK DIV
 FORMERLY CINCH-MONADNOCK DIV OF TRW INC V76530
- 72794 DZUS FASTENER COMPANY, INCORPORATED
 425 UNION BOULEVARD
 WEST ISLIP, NEW YORK 11795-3123
 FORMERLY IN BABYLON, NEW YORK
- 72962 HARVARD INDUSTRIES INC
 3 WERNER WAY SUITE 210
 LEBANON, NEW JERSEY 08833
 FORMERLY AMERACE CORP ESNA DIV
 FORMERLY ELASTIC STOP NUT IN UNION, NJ

24-33-71

VENDORS

81590 KORRY ELECTRONIC INC SUB OF CRITON CORP
901 DEXTER AVENUE NORTH
SEATTLE, WASHINGTON 98109-3515
FORMERLY KORRY, BORIS VB0021 AND KORRY MFG CO

91812 JANCO CORPORATION
3111 WINONA AVENUE,PO BOX 3038
BURBANK, CALIFORNIA 91504-2543

96182 EATON CORP AEROSPACE AND COMMERCIAL CONTROLS DIV MSC PROD
1640 MONROVIA
COSTA MESA, CALIFORNIA 92627-4405
FORMERLY MASTER SPECIALITIES CO IN GARDENA, CALIFORNIA

24-33-71

ILLUSTRATED PARTS LIST
01.1 Page 1004
Jul 01/01

REFERENCE DESIGNATOR INDEX (SEE SCHEMATIC DIAGRAM)		
REFERENCE DESIGNATOR	PART NUMBER	FIG-ITEM
J1	800000121-1	1-5A
J1	800000121-1	2-20
J2	BACC45FN20-25P	1-85
J2	BACC45FN20-41P	85A
J2	BACC45FN20-41P	2-105
L1	BCREF6117	1-25B
L1	BCREF6117	25K
L1	BCREF6117	2-40
L1	BCREF6117	40B
L1	BCREF8558	1-25J
L1	BCREF8558	2-40A
L1	S231T300-194	1-25
L2	BCREF6118	20B
L2	BCREF6118	20H
L2	BCREF6118	2-35
L2	BCREF6118	35D
L2	BCREF6430	1-20C
L2	BCREF6430	20J
L2	BCREF6430	2-35A
L2	BCREF6430	35E
L2	BCREF8559	1-20F
L2	BCREF8559	2-35B
L2	BCREF8593	20G
L2	BCREF8593	35C
L2	S231T300-195	1-20
L3	BCREF6431	27
L3	BCREF6431	27D
L3	BCREF6431	2-45
L3	BCREF6431	45B
L3	BCREF8594	1-27C
L3	BCREF8594	2-45A
S1	AC45-0015-1	1-30B

24-33-71

ILLUSTRATED PARTS LIST
01.1 Page 1005
Jul 01/03

REFERENCE DESIGNATOR INDEX (SEE SCHEMATIC DIAGRAM)		
REFERENCE DESIGNATOR	PART NUMBER	FIG-ITEM
S1	AC45-0015-1	2-50
S1	AC45-0015-2	1-30D
S1	AC45-0015-2	2-50B
S1	AC45-0036	1-30C
S1	AC45-0036	2-50A
S1	AC45-0036-1	1-30E
S1	AC45-0036-1	2-50C
S2	BCREFA0510	1-10M
S2	BCREFA0510	2-25F
S2	BCREF7611	1-10G
S2	BCREF7611	10H
S2	BCREF7611	10L
S2	BCREF7611	2-25C
S2	BCREF7611	25D
S2	BCREF7611	25E
S2	851-30768-2024	1-10C
S2	851-30768-2024	10D
S2	851-30768-2024	10K
S2	851-30768-2024	10N
S2	851-30768-2024	2-25
S2	851-30768-2024	25A
S2	851-30768-2024	25G
S2	851-30768-3024	1-10F
S2	851-30768-3024	10J
S2	851-30768-3024	10P
S2	851-30768-3024	2-25B
S2	851-30768-3024	25H
S2	851-30768-5024	1-10Q
S2	851-30768-5024	2-25J

24-33-71

 ILLUSTRATED PARTS LIST
 01.1 Page 1006
 Jul 01/03

PART NUMBER	AIRLINE PART NO.	FIG.	ITEM	TTL REQ
AC45-0015-1		1	30B	1
		2	50	1
AC45-0015-2		1	30D	1
		2	50B	1
AC45-0036		1	30C	1
		2	50A	1
AC45-0036-1		1	30E	1
		2	50C	1
BACC45FN20-25P		1	85	1
BACC45FN20-41P		1	85A	1
		2	105	1
BACN10NW1		1	80	3
		2	100	3
BACN10PA06-6		1	50	2
		2	70	2
BACP10U0225N		1	55B	1
		2	75	1
BACS21DX1B		1	45A	4
		2	65A	4
BCREFA0510		1	10M	1
		2	25F	1
BCREF6117		1	25B	1
		1	25K	1
		2	40	1
		2	40B	1
BCREF6118		1	20B	1
		1	20H	1
		2	35	1
		2	35D	1
BCREF6430		1	20C	1
		1	20J	1
		2	35A	1
		2	35E	1
BCREF6431		1	27	1
		1	27D	1
		2	45	1
		2	45B	1
BCREF7611		1	10G	1
		1	10H	1
		1	10L	1
		2	25C	1
		2	25D	1
		2	25E	1
BCREF8558		1	25J	1
		2	40A	1
BCREF8559		1	20F	1
		2	35B	1

24-33-71

ILLUSTRATED PARTS LIST
01.1 Page 1007
Jul 01/03

PART NUMBER	AIRLINE PART NO.	FIG.	ITEM	TTL REQ
BCREF8593		1	20G	1
		2	35C	1
BCREF8594		1	27C	1
		2	45A	1
BP248-110		2	10	1
BP248-127		2	10A	1
K19798-04		1	80	3
		2	100	3
MS35338-41		1	65	3
		2	85	3
NAS1801-04-5		1	75	3
		2	95	3
NAS1801-06-5		1	60	3
		2	80	3
NAS514P632-5		1	40	3
		2	60	3
PFSC35-38ASEMB		1	45A	4
		2	65A	4
RMA4812-160-40		1	80	3
		2	100	3
SF6G6CBB5D		1	50	2
		2	70	2
S231T290-1024		1	10G	1
		1	10H	1
		1	10L	1
		2	25C	1
		2	25D	1
		2	25F	1
		1	10C	1
		1	10D	1
		1	10K	1
S231T290-2024		1	10N	1
		2	25	1
		2	25A	1
		2	25G	1
		1	10F	1
		1	10J	1
		1	10P	1
		2	25B	1
		2	25H	1
S231T290-3024		1	10M	1
		2	10M	1
		1	10Q	1
S231T290-4024		2	25J	1
		1	15C	1
S231T290-5024		1	30	1
		2		
S231T290-803		1		

24-33-71

 ILLUSTRATED PARTS LIST
 01.1 Page 1008
 Jul 01/03

PART NUMBER	AIRLINE PART NO.	FIG.	ITEM	TTL REQ
S231T290-813		1	15D	1
		1	15J	1
		1	15M	1
		2	30A	1
S231T290-823		1	15G	1
		1	15K	1
		1	15N	1
		2	30B	1
S231T300-1194		1	25B	1
		1	25K	1
		2	40	1
		2	40B	1
S231T300-1195		1	20B	1
		1	20H	1
		2	35	1
		2	35D	1
S231T300-1291		1	20C	1
		1	20J	1
		2	35A	1
		2	35E	1
S231T300-1292		1	27	1
		1	27D	1
		2	45	1
		2	45B	1
S231T300-194		1	25	1
S231T300-195		1	20	1
S231T300-2194		1	25J	1
		2	40A	1
S231T300-2195		1	20F	1
		2	35B	1
S231T300-2291		1	20G	1
		2	35C	1
S231T300-2292		1	27C	1
		2	45A	1
S233T100-1072		2	5	1
S233T100-1080		2	5A	1
S233T100-1081		2	5B	1
S233T100-6005		2	5C	1
231T290-803		1	15H	1
		1	15L	1
233N3211-1		1	1	
233N3211-10		1	1D	RF
233N3211-1008		1	2A	RF
		2	15G	1
233N3211-1011		1	2B	RF
233N3211-1015		1	2C	RF

24-33-71

PART NUMBER	AIRLINE PART NO.	FIG.	ITEM	TTL REQ
233N3211-1019		1	2D	RF
		2	15H	1
233N3211-1020		1	2E	RF
		2	15J	1
233N3211-1024		1	2F	RF
233N3211-1025		1	2G	RF
233N3211-1026		1	2H	RF
233N3211-1027		1	2J	RF
233N3211-1029		1	2K	RF
		2	15K	1
233N3211-1030		1	2L	RF
		2	15L	1
233N3211-1031		1	2M	RF
233N3211-1032		1	2N	RF
233N3211-1033		1	2P	RF
233N3211-1034		1	2Q	RF
		2	15M	1
233N3211-1035		1	2R	RF
		2	15N	RF
233N3211-11		1	1B	RF
233N3211-1312		1	3C	RF
		2	1H	RF
233N3211-1313		1	3D	RF
		2	1J	RF
233N3211-1314		1	3E	RF
		2	1K	RF
233N3211-1315		1	3F	RF
		2	1L	RF
233N3211-1316		1	3G	RF
		2	1M	RF
233N3211-1317		1	3H	RF
		2	1N	RF
233N3211-1318		1	3J	RF
		2	1P	RF
233N3211-1319		1	3K	RF
		2	1Q	RF
233N3211-14		1	95B	1
233N3211-15		1	1C	RF
233N3211-16		1	95C	1
233N3211-17		1	1F	
233N3211-18		1	95E	1
		2	115A	1
233N3211-19		1	1G	RF
		2	15A	1
233N3211-20		1	1H	RF
		2	15B	1
233N3211-21		1	1P	

24-33-71

 ILLUSTRATED PARTS LIST
 01.1 Page 1010
 Jul 01/03

PART NUMBER	AIRLINE PART NO.	FIG.	ITEM	TTL REQ
233N3211-22		1	1Q	
233N3211-24		1	1J	RF
233N3211-25		1	1K	RF
233N3211-26		1	1L	RF
233N3211-27		1	1M	RF
233N3211-28		1	1N	
233N3211-29		1	1U	RF
		2	15C	1
233N3211-30		1	1V	RF
		2	15D	1
233N3211-31		1	1R	RF
233N3211-32		1	1S	RF
233N3211-33		1	1T	RF
233N3211-34		1	1W	RF
		2	15E	1
233N3211-35		1	1X	RF
		2	15F	1
233N3211-48		1	35B	1
		2	55	1
233N3211-49		1	35C	1
		2	55A	1
233N3211-7		1	95D	1
233N3211-8		1	1A	RF
		2	15	1
233N3211-9		1	95A	1
		2	115	1
233N3250-5		1	90	1
		2	110	1
233T3100-137		1	2T	RF
		2	1A	RF
233T3100-156		1	2U	RF
		2	1B	RF
233T3100-157		1	2V	RF
		2	1C	RF
233T3100-218		1	2W	RF
		2	1D	RF
233T3100-219		1	2X	RF
		2	1E	RF
233T3100-232		1	3A	RF
		2	1F	RF
233T3100-233		1	3B	RF
		2	1G	RF
233T3100-70		1	2S	RF
		2	1	RF
293162		1	80	3
		2	100	3

24-33-71

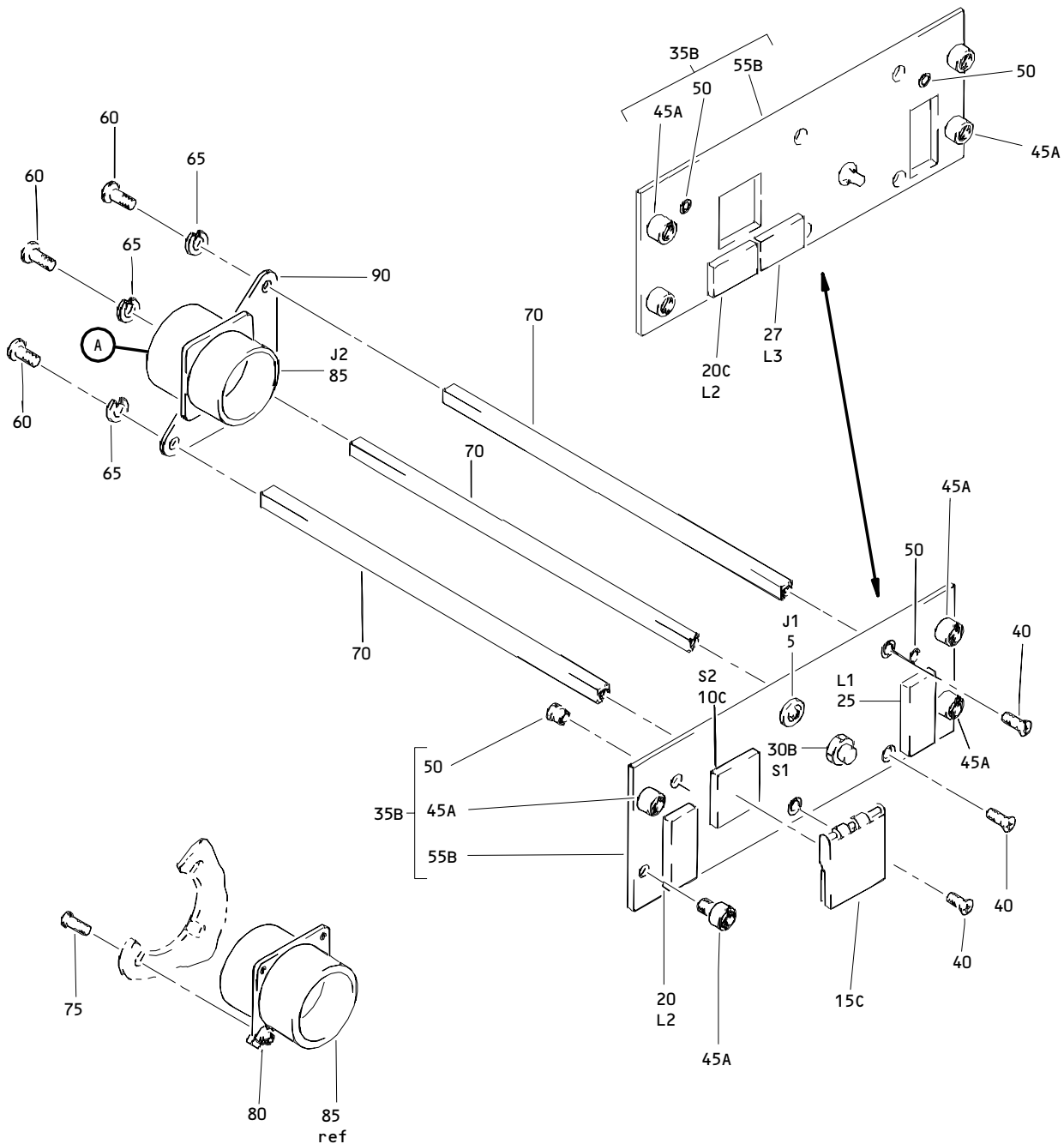
PART NUMBER	AIRLINE PART NO.	FIG.	ITEM	TTL REQ
433-100-004		1	15G	1
		1	15K	1
		1	15N	1
		2	30B	1
433-673-1001-1024		1	10G	1
		1	10H	1
		1	10L	1
		2	25C	1
		2	25D	1
		2	25F	1
433-673-1004-4024		1	10M	1
		2	10M	1
434-674-1005-1194		1	25B	1
		1	25K	1
		2	40	1
		2	40B	1
434-674-1005-1195		1	20B	1
		1	20H	1
		2	35	1
		2	35D	1
		1	20C	1
434-674-1005-1291		1	20J	1
		2	35A	1
		2	35E	1
		1	27	1
		1	27D	1
		2	45	1
434-674-1031-2194		2	45B	1
		1	25J	1
		2	40A	1
434-674-1031-2195		1	20F	1
		2	35B	1
434-674-1031-2291		1	20G	1
		2	35C	1
434-674-1031-2292		1	27C	1
		2	45A	1
		1	70	3
69B46200-17		2	90	3
		1	5A	1
800000121-1		2	20	1

24-33-71

 ILLUSTRATED PARTS LIST
 01.1 Page 1012
 Jul 01/03

PART NUMBER	AIRLINE PART NO.	FIG.	ITEM	TTL REQ	
851-30768-2024		1	10C	1	
		1	10D	1	
		1	10G	1	
		1	10H	1	
		1	10K	1	
		1	10L	1	
		1	10M	1	
		1	10N	1	
		2	25	1	
		2	10M	1	
		2	25A	1	
		2	25C	1	
		2	25D	1	
		2	25F	1	
		2	25G	1	
	851-30768-3024		1	10F	1
			1	10J	1
			1	10P	1
		2	25B	1	
		2	25H	1	
851-30768-3024		1	10L	1	
		1	10M	1	
		2	10M	1	
851-30768-803		2	25F	1	
		1	15C	1	
		1	15H	1	
		1	15L	1	
851-30768-813		2	30	1	
		1	15D	1	
		1	15J	1	
		1	15M	1	
		2	30A	1	
851-35100-5024		1	10L	1	
		1	10M	1	
		1	10Q	1	
		2	10M	1	
		2	25F	1	
		2	25J	1	

24-33-71



(A)

M10062 Battery Standby Power Panel Assembly
 Figure 1

24-33-71

ILLUSTRATED PARTS LIST
 01.101 Page 1014
 Jul 01/03

FIG. & ITEM	PART NO.	AIRLINE PART NUMBER	NOMENCLATURE 1234567	EFF CODE	QTY PER ASSY
01-					
-1	233N3211-1		DELETED		
-1A	233N3211-8		PANEL ASSY-M10062 BATTERY/ STBY PWR (PRE CSB 233N3211-24-01) (PRE CSB 233N3211-24-02)	B	RF
-1B	233N3211-11		PANEL ASSY-M10062 BATTERY/ STBY PWR (PRE CSB 233N3211-24-01) (PRE CSB 233N3211-24-02)	C	RF
-1C	233N3211-15		PANEL ASSY-M10062 BATTERY/ STBY PWR (PRE CSB 233N3211-24-01) (PRE CSB 233N3211-24-02)	D	RF
-1D	233N3211-10		PANEL ASSY-M10062 BATTERY/ STBY PWR	E	RF
-1F	233N3211-17		DELETED		
-1G	233N3211-19		PANEL ASSY-M10062 BATTERY/ STBY PWR (POST CSB 233N3211-24-01) (PRE CSB 233N3211-24-02)	G	RF
-1H	233N3211-20		PANEL ASSY-M10062 BATTERY/ STBY PWR (POST CSB 233N3211-24-01) (PRE CSB 233N3211-24-02)	H	RF
-1J	233N3211-24		PANEL ASSY-M10062 BATTERY STBY PWR (POST CSB 233N3211-24-01) (PRE CSB 233N3211-24-02)	V	RF
-1K	233N3211-25		PANEL ASSY-M10062 BATTERY/ STBY PWR (POST CSB 233N3211-24-01) (PRE CSB 233N3211-24-02)	K	RF
-1L	233N3211-26		PANEL ASSY-M10062 BATTERY/ STBY PWR (PRE CSB 233N3211-24-02)	J	RF
-1M	233N3211-27		PANEL ASSY-M10062 BATTERY/ STBY PWR (PRE CSB 233N3211-24-02)	L	RF

24-33-71

FIG. & ITEM	PART NO.	AIRLINE PART NUMBER	NOMENCLATURE 1234567	EFF CODE	QTY PER ASSY
01-					
-1N	233N3211-28		DELETED		
-1P	233N3211-21		DELETED		
-1Q	233N3211-22		DELETED		
-1R	233N3211-31		PANEL ASSY-M10062 BATTERY/ STBY PWR (PRE CSB 233N3211-24-02)	P	RF
-1S	233N3211-32		PANEL ASSY-M10062 BATTERY/ STBY PWR (PRE CSB 233N3211-24-02)	Q	RF
-1T	233N3211-33		PANEL ASSY-M10062 BATTERY/ STBY PWR (PRE CSB 233N3211-24-02)	M	RF
-1U	233N3211-29		PANEL ASSY-M10062 BATTERY/ STBY PWR (PRE CSB 233N3211-24-02)	R	RF
-1V	233N3211-30		PANEL ASSY-M10062 BATTERY/ STBY PWR (PRE CSB 233N3211-24-02)	S	RF
-1W	233N3211-34		PANEL ASSY-M10062 BATTERY/ STBY PWR (PRE CSB 233N3211-24-02)	T	RF
-1X	233N3211-35		PANEL ASSY-M10062 BATTERY/ STBY PWR (PRE CSB 233N3211-24-02)	U	RF
-2A	233N3211-1008		PANEL ASSY-M10062 BATTERY/ STBY PWR (POST CSB 233N3211-24-02)	W	RF
-2B	233N3211-1011		PANEL ASSY-M10062 BATTERY/ STBY PWR (POST CSB 233N3211-24-02)	X	RF

24-33-71

 ILLUSTRATED PARTS LIST
 01.101 Page 1016
 Jul 01/03



BOEING
COMPONENT
MAINTENANCE MANUAL

FIG. & ITEM	PART NO.	AIRLINE PART NUMBER	NOMENCLATURE 1234567	EFF CODE	QTY PER ASSY
01- -2C	233N3211-1015		PANEL ASSY-M10062 BATTERY/ STBY PWR (POST CSB 233N3211-24-02)	Y	RF
-2D	233N3211-1019		PANEL ASSY-M10062 BATTERY/ STBY PWR (POST CSB 233N3211-24-02)	Z	RF
-2E	233N3211-1020		PANEL ASSY-M10062 BATTERY/ STBY PWR (POST CSB 233N3211-24-02)	AA	RF
-2F	233N3211-1024		PANEL ASSY-M10062 BATTERY/ STBY PWR (POST CSB 233N3211-24-02)	BA	RF
-2G	233N3211-1025		PANEL ASSY-M10062 BATTERY/ STBY PWR (POST CSB 233N3211-24-02)	CA	RF
-2H	233N3211-1026		PANEL ASSY-M10062 BATTERY/ STBY PWR (POST CSB 233N3211-24-02)	DA	RF
-2J	233N3211-1027		PANEL ASSY-M10062 BATTERY/ STBY PWR (POST CSB 233N3211-24-02)	EA	RF
-2K	233N3211-1029		PANEL ASSY-M10062 BATTERY/ STBY PWR (POST CSB 233N3211-24-02)	FA	RF
-2L	233N3211-1030		PANEL ASSY-M10062 BATTERY/ STBY PWR (POST CSB 233N3211-24-02)	GA	RF
-2M	233N3211-1031		PANEL ASSY-M10062 BATTERY/ STBY PWR (POST CSB 233N3211-24-02)	HA	RF
-2N	233N3211-1032		PANEL ASSY-M10062 BATTERY/ STBY PWR (POST CSB 233N3211-24-02)	IA	RF
-2P	233N3211-1033		PANEL ASSY-M10062 BATTERY/ STBY PWR (POST CSB 233N3211-24-02)	JA	RF
-2Q	233N3211-1034		PANEL ASSY-M10062 BATTERY/ STBY PWR (POST CSB 233N3211-24-02)	KA	RF
-2R	233N3211-1035		PANEL ASSY-M10062 BATTERY/ STBY PWR (POST CSB 233N3211-24-02)	LA	RF

24-33-71

ILLUSTRATED PARTS LIST
01.101 Page 1017
Jul 01/03

FIG. & ITEM	PART NO.	AIRLINE PART NUMBER	NOMENCLATURE 1234567	EFF CODE	QTY PER ASSY
01- -2S	233T3100-70		PANEL ASSY-M10062 BATTERY/ STBY PWR (PRE CSB 233N3211-24-02 R1) (FOR DETAILS SEE FIG. 2)	MA	RF
-2T	233T3100-137		PANEL ASSY-M10062 BATTERY/ STBY PWR (PRE CSB 233N3211-24-02 R1) (FOR DETAILS SEE FIG. 2)	NA	RF
-2U	233T3100-156		PANEL ASSY-M10062 BATTERY/ STBY PWR (PRE CSB 233N3211-24-02 R1) (FOR DETAILS SEE FIG. 2)	PA	RF
-2V	233T3100-157		PANEL ASSY-M10062 BATTERY/ STBY PWR (PRE CSB 233N3211-24-02 R1) (FOR DETAILS SEE FIG. 2)	QA	RF
-2W	233T3100-218		PANEL ASSY-M10062 BATTERY/ STBY PWR (PRE CSB 233N3211-24-02 R1) (FOR DETAILS SEE FIG. 2)	RA	RF
-2X	233T3100-219		PANEL ASSY-M10062 BATTERY/ STBY PWR (PRE CSB 233N3211-24-02 R1) (FOR DETAILS SEE FIG. 2)	SA	RF
-3A	233T3100-232		PANEL ASSY-M10062 BATTERY/ STBY PWR (PRE CSB 233N3211-24-02 R1) (FOR DETAILS SEE FIG. 2)	TA	RF
-3B	233T3100-233		PANEL ASSY-M10062 BATTERY/ STBY PWR (PRE CSB 233N3211-24-02 R1) (FOR DETAILS SEE FIG. 2)	UA	RF

24-33-71

 ILLUSTRATED PARTS LIST
 01.1 Page 1018
 Jul 01/03

FIG. & ITEM	PART NO.	AIRLINE PART NUMBER	NOMENCLATURE 1234567	EFF CODE	QTY PER ASSY
01- -3C	233N3211-1312		PANEL ASSY-M10062 BATTERY/ STBY PWR (POST CSB 233N3211-24-02 R1) (FOR DETAILS SEE FIG. 2)	VA	RF
-3D	233N3211-1313		PANEL ASSY-M10062 BATTERY/ STBY PWR (POST CSB 233N3211-24-02 R1) (FOR DETAILS SEE FIG. 2)	WA	RF
-3E	233N3211-1314		PANEL ASSY-M10062 BATTERY/ STBY PWR (POST CSB 233N3211-24-02 R1) (FOR DETAILS SEE FIG. 2)	XA	RF
-3F	233N3211-1315		PANEL ASSY-M10062 BATTERY/ STBY PWR (POST CSB 233N3211-24-02 R1) (FOR DETAILS SEE FIG. 2)	AB	RF
-3G	233N3211-1316		PANEL ASSY-M10062 BATTERY/ STBY PWR (POST CSB 233N3211-24-02 R1) (FOR DETAILS SEE FIG. 2)	BB	RF
-3H	233N3211-1317		PANEL ASSY-M10062 BATTERY/ STBY PWR (POST CSB 233N3211-24-02 R1) (FOR DETAILS SEE FIG. 2)	CB	RF

24-33-71

ILLUSTRATED PARTS LIST
01.1 Page 1019
Jul 01/03

FIG. & ITEM	PART NO.	AIRLINE PART NUMBER	NOMENCLATURE 1234567	EFF CODE	QTY PER ASSY
01-3J	233N3211-1318		PANEL ASSY-M10062 BATTERY/ STBY PWR (POST CSB 233N3211-24-02 R1) (FOR DETAILS SEE FIG. 2)	DB	RF
-3K	233N3211-1319		PANEL ASSY-M10062 BATTERY/ STBY PWR (POST CSB 233N3211-24-02 R1) (FOR DETAILS SEE FIG. 2)	EB	RF
5A	800000121-1		.CONNECTOR-PWR (V05617) (J1)		1
10C	851-30768-2024		.SWITCH-LIGHTED PUSHBUTTON IND (ON/OFF) (851-30768-2024 T/W 851-30768-803,-813 OR 433-100-004 SWITCHGUARD I/W BCREF7611, 851-30768-3024, BCREFA0510, OR 851-35100-5024 WITH 433-100-004 SWITCHGUARD) (851-30768-2024 T/W 851-30768-803, OR -813 SWITCHGUARD I/W BCREF7611, T/W 433-100-004 SWITCHGUARD) (V96182) (S2) (SPEC S231T290-2024) (OPT ITEM 10G)	B,E	1

24-33-71

 ILLUSTRATED PARTS LIST
 01.1 Page 1020
 Jul 01/03

FIG. & ITEM	PART NO.	AIRLINE PART NUMBER	NOMENCLATURE 1234567	EFF CODE	QTY PER ASSY
01- -10D	851-30768-2024		.SWITCH-LIGHTED PUSHBUTTON IND (ON/OFF) (851-30768-2024 T/W 851-30768-803, -813 OR 433-100-004 SWITCHGUARD I/W BCREFA0510 OR 851-30768-3024, BCREFA0510 OR 851-35100-5024 WITH 433-100-004 SWITCHGUARD) (851-30768-2024 T/W 851-30768-803, OR -813 SWITCHGUARD I/W BCREFA0510 OR 433-100-004 SWITCHGUARD) (V96182) (S2) (SPEC S231T290-2024)	C, D, G, H	1
-10F	851-30768-3024		.SWITCH-LIGHTED PUSHBUTTON IND (ON/OFF) (851-30768-2024 T/W 851-30768-803, -813 OR 433-100-004 SWITCHGUARD I/W BCREFA0510 OR 851-30768-3024, BCREFA0510 OR 851-35100-5024 WITH 433-100-004 SWITCHGUARD) (V96182) (S2) (SPEC S231T290-3024) (OPT ITEM 10H)	J, L, M P-U	1

24-33-71

ILLUSTRATED PARTS LIST
01.1 Page 1021
Jul 01/03

FIG. & ITEM	PART NO.	AIRLINE PART NUMBER	NOMENCLATURE 1234567	EFF CODE	QTY PER ASSY
01- -10G	BCREF7611		.SWITCH-LIGHTED PUSHBUTTON IND (ON/OFF) (851-30768-2024 T/W 851-30768-803, OR -813 SWITCHGUARD I/W BCREF7611 T/W 433-100-004 SWITCHGUARD) (V81590) (433-673-1001-1024) (S2) (SPEC S231T290-1024) (OPT ITEM 10C)	B,E	1
-10H	BCREF7611		.SWITCH-LIGHTED PUSHBUTTON IND (ON/OFF) (851-30768-2024 T/W 851-30768-803 OR -813 SWITCHGUARD I/W BCREF7611 T/W 433-100-004 SWITCHGUARD) (V81590) (433-673-1001-1024) (S2) (SPEC S231T290-1024) (OPT ITEM 10F)	J,L,M P-U	1
-10J	851-30768-3024		.SWITCH-LIGHTED PUSHBUTTON IND (ON/OFF) (851-30768-2024 T/W 851-30768-803, -813 OR 433-100-004 SWITCHGUARD I/W BCREF7611, 851-30768-3024, BCREFA0510 OR 851-35100-5024 WITH 433-100-004 SWITCHGUARD) (V96182) (S2) (SPEC S231T290-3024) (OPT ITEM 10K)	K,V	1

24-33-71

 ILLUSTRATED PARTS LIST
 01.101 Page 1022
 Jul 01/03



BOEING
COMPONENT
MAINTENANCE MANUAL

FIG. & ITEM	PART NO.	AIRLINE PART NUMBER	NOMENCLATURE 1234567	EFF CODE	QTY PER ASSY
01- -10K	851-30768-2024		.SWITCH-LIGHTED PUSHBUTTON IND (ON/OFF) (851-30768-2024 T/W 851-30768-803, -813 OR 433-100-004 SWITCHGUARD I/W BCREFA0510 OR 851-35100-5024 WITH 433-100-004 SWITCHGUARD) (851-30768-2024 T/W 851-30768-803 OR -813 SWITCHGUARD I/W BCREFA0510 OR 851-35100-5024 WITH 433-100-004 SWITCHGUARD) (V96182) (S2) (SPEC S231T290-2024) (OPT ITEM 10J)	K,V	1
-10L	BREF7611		.SWITCH-LIGHTED PUSHBUTTON IND (ON/OFF) (V81590) (433-673-1001-1024) (S2) (851-30768-2024 T/W 851-30768-803, -813, OR 433-100-004 SWITCHGUARD I/W BCREFA0510, OR 851-35100-5024 WITH 433-100-004 SWITCHGUARD) (SPEC S231T290-1024) (USE WITH CONFIG "D" MASTER MODULE. SEE REPAIR FOR ADDITIONAL INFORMATION) (OPT ITEMS 10M,10N,10P, 10Q)	W-LA	1

24-33-71

ILLUSTRATED PARTS LIST
01.101 Page 1023
Jul 01/03

FIG. & ITEM	PART NO.	AIRLINE PART NUMBER	NOMENCLATURE 1234567	EFF CODE	QTY PER ASSY
01- -10M	BCREFA0510		.SWITCH-LIGHTED PUSHBUTTON IND (ON/OFF) (V81590) (433-673-1004-4024) (S2) (851-30768-2024 T/W 851-30768-803, -813, OR 433-100-004 SWITCHGUARD I/W BCREF7611, 851-30768-3024, BCREFA0510, OR 851-35100-5024 WITH 433-100-004 SWITCHGUARD) (SPEC S231T290-4024) (USE WITH CONFIG "D" MASTER MODULE. SEE REPAIR FOR ADDITIONAL INFORMATION) (OPT ITEMS 10L,10N,10P, 10Q)	W-LA	1
-10N	851-30768-2024		.SWITCH-LIGHTED PUSHBUTTON IND (ON/OFF) (V96182) (S2) (851-30768-2024 T/W 851-30768-803, -813, OR 433-100-004 SWITCHGUARD I/W BCREF7611, 851-30768-3024, BCREFA0510, OR 851-35100-5024 WITH 433-100-004 SWITCHGUARD) (SPEC S231T290-2024) (OPT ITEMS 10L,10M,10P, 10Q)	W-LA	1

24-33-71

 ILLUSTRATED PARTS LIST
 01.101 Page 1024
 Jul 01/03

 **BOEING**
COMPONENT
MAINTENANCE MANUAL

FIG. & ITEM	PART NO.	AIRLINE PART NUMBER	NOMENCLATURE 1234567	EFF CODE	QTY PER ASSY
01- -10P	851-30768-3024		.SWITCH-LIGHTED PUSHBUTTON IND (ON/OFF) (V96182) (S2) (851-30768-2024 T/W 851-30768-803, -813, OR 433-100-004 SWITCHGUARD I/W BCREF7611, 851-30768-3024, BCREFA0510, OR 851-35100-5024 WITH 433-100-004 SWITCHGUARD) (SPEC S231T290-3024) (OPT ITEMS 10L,10M,10N, 10Q)	W-LA	1
-10Q	851-35100-5024		.SWITCH-LIGHTED PUSHBUTTON IND (ON/OFF) (V96182) (S2) (851-30768-2024 T/W 851-30768-803, -813, OR 433-100-004 SWITCHGUARD I/W BCREF7611, 851-30768-3024, BCREFA0510, OR 851-35100-5024 WITH 433-100-004 SWITCHGUARD) (SPEC S231T290-5024) (OPT ITEMS 10L,10M,10N, 10P)	W-LA	1
15C	851-30768-803		.GUARD-SWITCH (V96182) (SPEC S231T290-803) (OPT ITEM 15D)	B-E, G,H, L,Z AA,EA	1

24-33-71

ILLUSTRATED PARTS LIST
01.101 Page 1025
Jul 01/03

FIG. & ITEM	PART NO.	AIRLINE PART NUMBER	NOMENCLATURE 1234567	EFF CODE	QTY PER ASSY
01- -15D	851-30768-813		. GUARD-SWITCH (433-100-004 MAY REPLACE 851-30768-813 EXCEPT 851-30768-813 OPTIONAL TO 433-100-004 FOR NA213NA214) (V96182) (SPEC S231T290-813) (OPT ITEM 15C)	B-E, G,H, L,Z, AA,EA	1
-15G	433-100-004		. GUARD-SWITCH (433-100-004 MAY REPLACE 851-30768-813 EXCEPT 851-30768-813 OPTIONAL TO 433-100-004 FOR NA213NA21) (V81590) (SPEC S231T290-823)	M,P-U FA-LA	1
-15H	851-30768-803		. GUARD-SWITCH (ITEM 15H OR ITEM 15J IS OPTIONAL TO ITEM 15K FOR USE WITH ITEM 10K ONLY) (V96182) (SPEC 231T290-803)	K,V, BA,CA	1
-15J	851-30768-813		. GUARD-SWITCH (ITEM 15H OR ITEM 15J IS OPTIONAL TO ITEM 15K FOR USE WITH ITEM 10K ONLY) (433-100-004 MAY REPLACE 851-30768-813 EXCEPT 851-30768-813 OPTIONAL TO 433-100-004 FOR NA213NA214) (V96182) (SPEC S231T290-813)	K,V, BA,CA	1

24-33-71

 ILLUSTRATED PARTS LIST
 01.1 Page 1026
 Jul 01/03

BOEING
COMPONENT
MAINTENANCE MANUAL

FIG. & ITEM	PART NO.	AIRLINE PART NUMBER	NOMENCLATURE 1234567	EFF CODE	QTY PER ASSY
01- -15K	433-100-004		.GUARD-SWITCH (ITEM 15H OR ITEM 15J IS OPT TO ITEM 15K FOR USE WITH ITEM 10K ONLY) (433-100-004 MAY REPLACE 851-30768-813 EXCEPT 851-30768-813 OPT TO 433-100-004 FOR NA213NA21) (V81590) (SPEC S231T290-823)	K,V, BA,CA	1
-15L	851-30768-803		.GUARD-SWITCH (V96182) (SPEC 231T290-803) (OPT ITEMS 15M, 15N)	J,DA	1
-15M	851-30768-813		.GUARD-SWITCH (433-100-004 MAY REPLACE 851-30768-813 EXCEPT 851-30768-813 OPT TO 433-100-004 FOR NA213NA214) (V96182) (SPEC S231T290-813) (OPT ITEMS 15L, 15N)	J,DA	1
-15N	433-100-004		.GUARD-SWITCH (433-100-004 MAY REPLACE 851-30768-813 EXCEPT 851-30768-813 OPT TO 433-100-004 FOR NA213NA21) (V81590) (SPEC S231T290-823) (OPT ITEMS 15L, 15M)	J,DA	1
20	S231T300-195		.LIGHT (L2)	E	1
-20B	BCREF6118		.LIGHT ASSY-DISCH IND (V81590) (434-674-1005-1195) (L2) (SPEC S231T300-1195)	B,D,G K-M, R,W, Y,Z, CA,EA JA,FA	1

24-33-71

FIG. & ITEM	PART NO.	AIRLINE PART NUMBER	NOMENCLATURE 1234567	EFF CODE	QTY PER ASSY
01-20C	BCREF6430		.LIGHT ASSY-MAIN BAT DISCH IND (V81590) (434-674-1005-1291) (L2) (SPEC S231T300-1291)	C,H, J,S, X,AA, DA,GA	1
-20F	BCREF8559		.LIGHT ASSY-DISCH IND (V81590) (434-674-1031-2195) (L2) (SPEC S231T300-2195) (OPT ITEM 20H)	Q,T, IA,KA	1
-20G	BCREF8593		.LIGHT ASSY-DISCH IND (V81590) (434-674-1031-2291) (L2) (SPEC S231T300-2291) (OPT ITEM 20J)	P,U,V BA,HA LA	1
-20H	BCREF6118		.LIGHT ASSY-DISCH IND (V81590) (434-674-1005-1195) (L2) (SPEC S231T300-1195) (OPT ITEM 20F)	Q,T, IA,KA	1
-20J	BCREF6430		.LIGHT ASSY-DISCH IND (V81590) (434-674-1005-1291) (L2) (SPEC S231T300-1291) (OPT ITEM 20G)	P,U,V BA,HA LA	1

24-33-71

 ILLUSTRATED PARTS LIST
 01.101 Page 1028
 Jul 01/03

 **BOEING**
COMPONENT
MAINTENANCE MANUAL

FIG. & ITEM	PART NO.	AIRLINE PART NUMBER	NOMENCLATURE 1234567	EFF CODE	QTY PER ASSY
01-25	S231T300-194		.LIGHT (L1)	E	1
-25B	BCREF6117		.LIGHT ASSY-OFF IND (V81590) (434-674-1005-1194) (L1) (SPEC S231T300-1194)	B-D, G,H, J,L, M,R, S,W-Z AA, DA-GA JA	1
-25J	BCREF8558		.LIGHT ASSY-DISCH IND (V81590) (434-674-1031-2194) (L1) (SPEC S231T300-2194) (OPT ITEM 25K)	K,P, Q,T-V BA,CA HA,IA KA,LA	1
-25K	BCREF6117		.LIGHT ASSY-DISCH IND (V81590) (434-674-1005-1194) (L1) (SPEC S231T300-1194) (OPT ITEM 25J)	K,P, Q,T-V BA,CA HA,IA KA,LA	1
27	BCREF6431		.LIGHT ASSY-APU BAT DISCH IND (V81590) (434-674-1005-1292) (L3) (SPEC S231T300-1292)	C,H, J,S, X,AA, DA,GA	1
-27C	BCREF8594		.LIGHT ASSY-DISCH IND (V81590) (434-674-1031-2292) (L3) (SPEC S231T300-2292) (OPT ITEM 27D)	P,U, V,BA, HA,LA	1

24-33-71

FIG. & ITEM	PART NO.	AIRLINE PART NUMBER	NOMENCLATURE 1234567	EFF CODE	QTY PER ASSY
01- -27D	BCREF6431		.LIGHT ASSY-DISCH IND (V81590) (434-674-1005-1292) (L3) (SPEC S231T300-1292) (OPT ITEM 27C)	P,U, V,BA, HA,LA	1
30B	AC45-0015-1		.SWITCH-ROTARY (V91812) (S1) (OPT ITEM 30D)	B-E, W-Y	1
-30C	AC45-0036		.SWITCH-ROTARY (V91812) (S1) (OPT ITEM 30E)	G-M, P-V Z-LA	1
-30D	AC45-0015-2		.SWITCH-ROTARY (V91812) (S1) (OPT ITEM 30B)	B-E, W-Y	1
-30E	AC45-0036-1		.SWITCH-ROTARY (V91812) (S1) (OPT ITEM 30C)	G,M, P-V, Z-LA	1
35B	233N3211-48		.BASEPLATE ASSY	B,D, E,G, K-M, Q,R, T,W, Y,Z, CA,EA FA, IA-KA	1
-35C	233N3211-49		.BASEPLATE ASSY	C,H, J,P, S,U, V,X, AA,BA DA,HA GA,LA	1
40	NAS514P632-5		ATTACHING PARTS .SCREW -----*-----		3

24-33-71

 ILLUSTRATED PARTS LIST
 01.1 Page 1030
 Jul 01/03

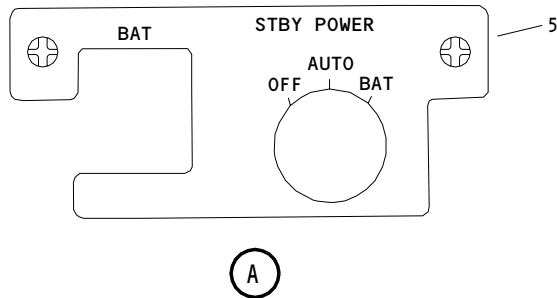
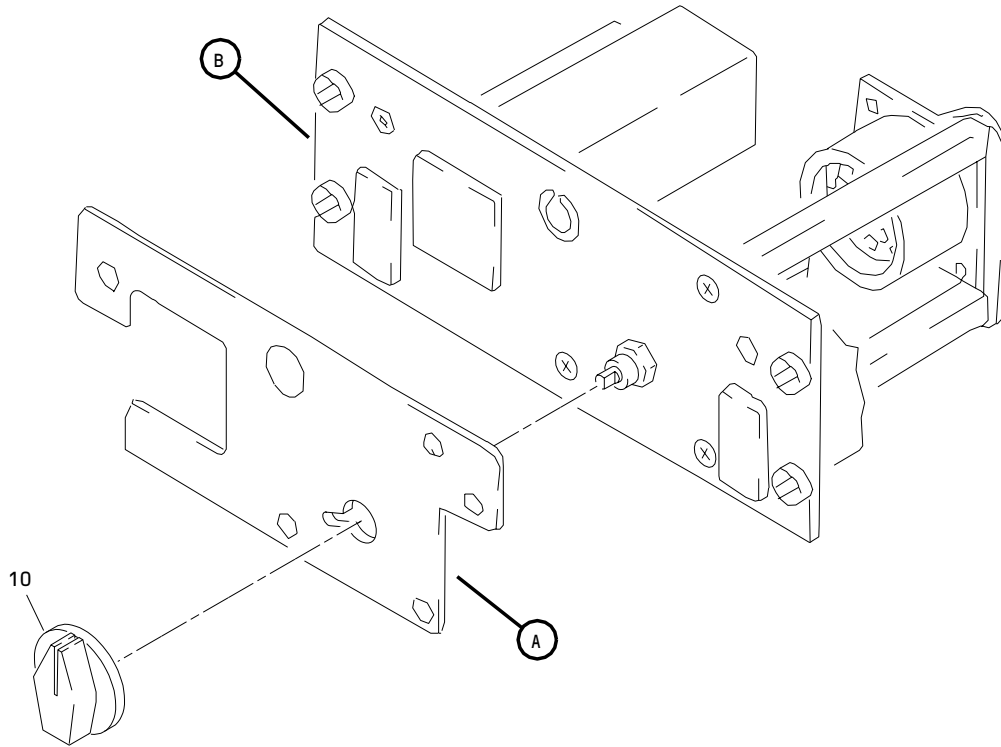
FIG. & ITEM	PART NO.	AIRLINE PART NUMBER	NOMENCLATURE 1234567	EFF CODE	QTY PER ASSY
01-45A	PFSC35-38ASEMB		..STUD ASSY (V72794) (SPEC BACS21DX1B)		4
50	SF6G6CBB5D		..NUT (V12324) (SPEC BACN10PA06-6)		2
55B	BACP10U0225N		..PANEL		1
60	NAS1801-06-5		.SCREW		3
65	MS35338-41		.WASHER		3
70	69B46200-17		.STANDOFF		3
75	NAS1801-04-5		.SCREW		3
80	K19798-04		.NUT- (V15653) (SPEC BACN10NW1) (OPT RMA4812-160-40 (V72962)) (OPT 293162 (V60119))		3
85	BACC45FN20-25P		.CONNECTOR- (J2)	E	1
-85A	BACC45FN20-41P		.CONNECTOR- (J2)	B-D, G-M, P-V, W-Y, Z-LA	1
90	233N3250-5		.BRACKET-SPRT		1
-95A	233N3211-9		.WIRE BUNDLE ASSY	B,G, M,R, T,W, Z,FA, JA,KA	1
-95B	233N3211-14		.WIRE BUNDLE ASSY	C,J, P,V, X,BA, DA,HA	1

24-33-71

FIG. & ITEM	PART NO.	AIRLINE PART NUMBER	NOMENCLATURE 1234567	EFF CODE	QTY PER ASSY
01- -95C	233N3211-16		.WIRE BUNDLE ASSY	D,K, L,Q, Y,CA, EA,IA	1
-95D	233N3211-7		.WIRE BUNDLE ASSY	E	1
-95E	233N3211-18		.WIRE BUNDLE ASSY	H,S, U,AA, GA,LA	1

- Item Not Illustrated

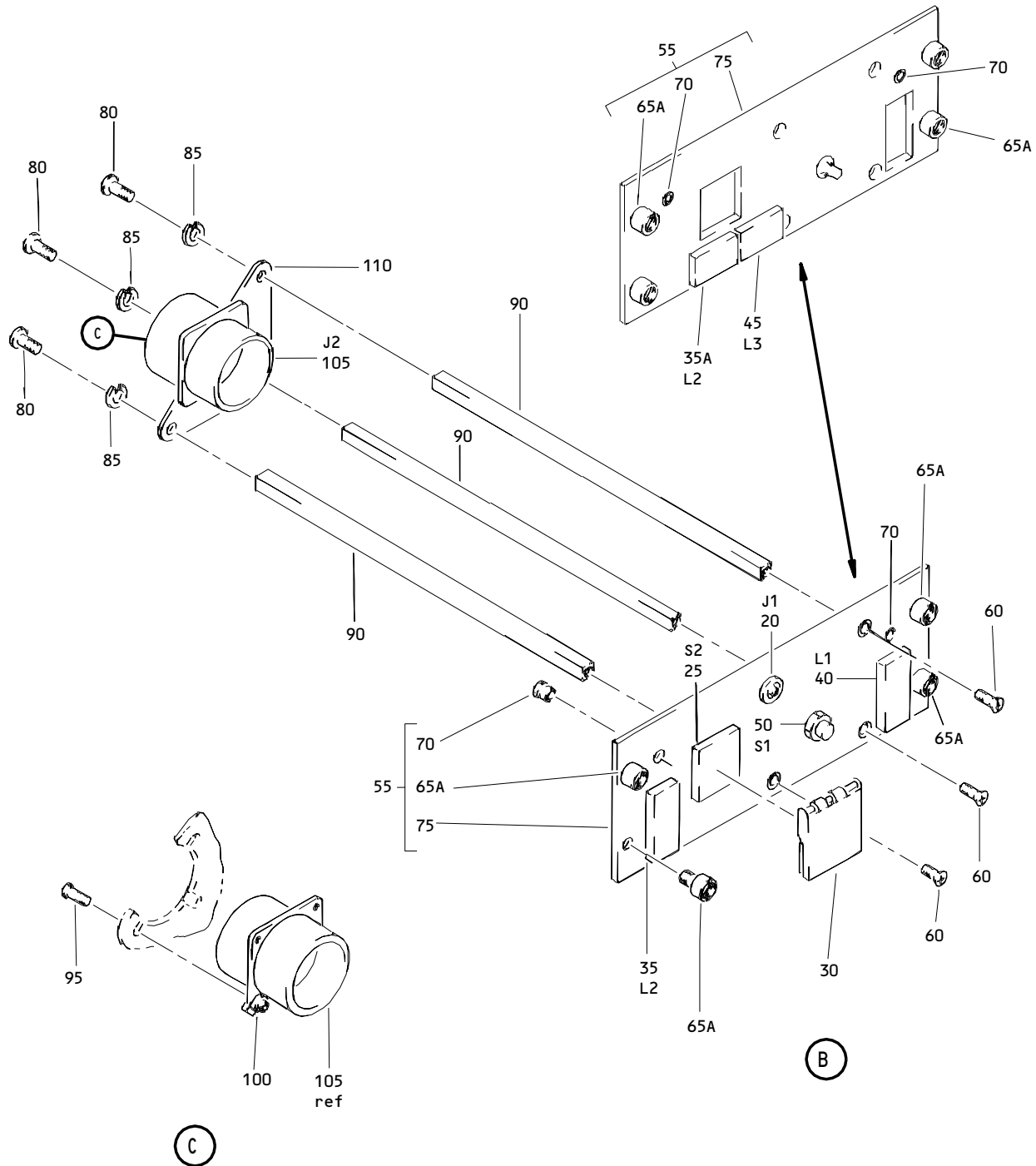
24-33-71



Battery Standby Power Panel Assembly, M10062
Figure 2 (Sheet 1)

24-33-71

ILLUSTRATED PARTS LIST
01.1 Page 1033
Jul 01/03



Battery Standby Power Panel Assembly, M10062
 Figure 2 (Sheet 2)

24-33-71

ILLUSTRATED PARTS LIST
 01.1 Page 1034
 Jul 01/03



BOEING
COMPONENT
MAINTENANCE MANUAL

FIG. & ITEM	PART NO.	AIRLINE PART NUMBER	NOMENCLATURE 1234567	EFF CODE	QTY PER ASSY
02- -1	233T3100-70		PANEL ASSY-M10062 BATTERY/ STBY PWR (PRE CSB 233N3211-24-02 R1)	MA	RF
-1A	233T3100-137		PANEL ASSY-M10062 BATTERY/ STBY PWR (PRE CSB 233N3211-24-02 R1)	NA	RF
-1B	233T3100-156		PANEL ASSY-M10062 BATTERY/ STBY PWR (PRE CSB 233N3211-24-02 R1)	PA	RF
-1C	233T3100-157		PANEL ASSY-M10062 BATTERY/ STBY PWR (PRE CSB 233N3211-24-02 R1)	QA	RF
-1D	233T3100-218		PANEL ASSY-M10062 BATTERY/ STBY PWR (PRE CSB 233N3211-24-02 R1)	RA	RF
-1E	233T3100-219		PANEL ASSY-M10062 BATTERY/ STBY PWR (PRE CSB 233N3211-24-02 R1)	SA	RF
-1F	233T3100-232		PANEL ASSY-M10062 BATTERY/ STBY PWR (PRE CSB 233N3211-24-02 R1)	TA	RF
-1G	233T3100-233		PANEL ASSY-M10062 BATTERY/ STBY PWR (PRE CSB 233N3211-24-02 R1)	UA	RF
-1H	233N3211-1312		PANEL ASSY-M10062 BATTERY/ STBY PWR (POST CSB 233N3211-24-02 R1)	VA	RF
-1J	233N3211-1313		PANEL ASSY-M10062 BATTERY/ STBY PWR (POST CSB 233N3211-24-02 R1)	WA	RF

24-33-71

ILLUSTRATED PARTS LIST
01.1 Page 1035
Jul 01/03

FIG. & ITEM	PART NO.	AIRLINE PART NUMBER	NOMENCLATURE 1234567	EFF CODE	QTY PER ASSY
02- -1K	233N3211-1314		PANEL ASSY-M10062 BATTERY/ STBY PWR (POST CSB 233N3211-24-02 R1)	XA	RF
-1L	233N3211-1315		PANEL ASSY-M10062 BATTERY/ STBY PWR (POST CSB 233N3211-24-02 R1)	AB	RF
-1M	233N3211-1316		PANEL ASSY-M10062 BATTERY/ STBY PWR (POST CSB 233N3211-24-02 R1)	BB	RF
-1N	233N3211-1317		PANEL ASSY-M10062 BATTERY/ STBY PWR (POST CSB 233N3211-24-02 R1)	CB	RF
-1P	233N3211-1318		PANEL ASSY-M10062 BATTERY/ STBY PWR (POST CSB 233N3211-24-02 R1)	DB	RF
-1Q	233N3211-1319		PANEL ASSY-M10062 BATTERY/ STBY PWR (POST CSB 233N3211-24-02 R1)	EB	RF
5	S233T100-1072		.LIGHTPLATE (V51896)	NA	1
-5A	S233T100-1080		.LIGHTPLATE (V51896)	PA,RA TA	1
-5B	S233T100-1081		.LIGHTPLATE (V51896)	QA,SA UA	1
-5C	S233T100-6005		.LIGHTPLATE (V51896)	MA	1

24-33-71

 ILLUSTRATED PARTS LIST
 01.1 Page 1036
 Jul 01/03

FIG. & ITEM	PART NO.	AIRLINE PART NUMBER	NOMENCLATURE 1234567	EFF CODE	QTY PER ASSY
02-10	BP248-110		.KNOB (V15084) (OPT ITEM 10A)	MA-UA	1
-10A	BP248-127		.KNOB (V15084) (OPT ITEM 10)	MA-UA	1
-15	233N3211-8		PANEL ASSY-M10062 BATTERY/ STBY PWR	MA,NA	1
-15A	233N3211-19		PANEL ASSY-M10062 BATTERY/ STBY PWR	PA	1
-15B	233N3211-20		PANEL ASSY-M10062 BATTERY/ STBY PWR	QA	1
-15C	233N3211-29		PANEL ASSY-M10062 BATTERY/ STBY PWR	RA	1
-15D	233N3211-30		PANEL ASSY-M10062 BATTERY/ STBY PWR	SA	1
-15E	233N3211-34		PANEL ASSY-M10062 BATTERY/ STBY PWR	TA	1
-15F	233N3211-35		PANEL ASSY-M10062 BATTERY/ STBY PWR	UA	1
-15G	233N3211-1008		PANEL ASSY-M10062 BATTERY/ STBY PWR	DB,EB	1
-15H	233N3211-1019		PANEL ASSY-M10062 BATTERY/ STBY PWR	VA	1
-15J	233N3211-1020		PANEL ASSY-M10062 BATTERY/ STBY PWR	WA	1
-15K	233N3211-1029		PANEL ASSY-M10062 BATTERY/ STBY PWR	XA	1
-15L	233N3211-1030		PANEL ASSY-M10062 BATTERY/ STBY PWR	AB	1

24-33-71

FIG. & ITEM	PART NO.	AIRLINE PART NUMBER	NOMENCLATURE 1234567	EFF CODE	QTY PER ASSY
02- -15M	233N3211-1034		PANEL ASSY-M10062 BATTERY/ STBY PWR	BB	1
-15N	233N3211-1035		PANEL ASSY-M10062 BATTERY/ STBY PWR	CB	RF
20	800000121-1		..CONNECTOR-PWR (V05617) (J1)		1
25	851-30768-2024		..SWITCH-LIGHTED PUSHBUTTON IND (ON/OFF) (851-30768-2024 T/W 851-30768-803, -813 OR 433-100-004 SWITCHGUARD I/W BCREF7611, 851-30768-3024, BCREFA0510, OR 851-35100-5024 WITH 433-100-004 SWITCHGUARD) (851-30768-2024 T/W 851-30768-803, OR -813 SWITCHGUARD I/W BCREF7611, T/W 433-100-004 SWITCHGUARD) (V96182) (S2) (SPEC S231T290-2024) (OPT ITEM 25C)	MA,NA	1

24-33-71

 ILLUSTRATED PARTS LIST
 01.1 Page 1038
 Jul 01/03

FIG. & ITEM	PART NO.	AIRLINE PART NUMBER	NOMENCLATURE 1234567	EFF CODE	QTY PER ASSY
02- -25A	851-30768-2024		..SWITCH-LIGHTED PUSHBUTTON IND (ON/OFF) (851-30768-2024 T/W 851-30768-803, -813 OR 433-100-004 SWITCHGUARD I/W BCREF7611, 851-30768-3024, BCREFA0510 OR 851-35100-5024 WITH 433-100-004 SWITCHGUARD) (851-30768-2024 T/W 851-30768-803, OR -813 SWITCHGUARD I/W BCREF7611 T/W 433-100-004 SWITCHGUARD) (V96182) (S2) (SPEC S231T290-2024)	PA,QA	1
-25B	851-30768-3024		..SWITCH-LIGHTED PUSHBUTTON IND (ON/OFF) (851-30768-2024 T/W 851-30768-803, -813 OR 433-100-004 SWITCHGUARD I/W BCREF7611, 851-30768-3024, BCREFA0510 OR 851-35100-5024 WITH 433-100-004 SWITCHGUARD) (V96182) (S2) (SPEC S231T290-3024) (OPT ITEM 25D)	RA,SA TA,UA	1

24-33-71

FIG. & ITEM	PART NO.	AIRLINE PART NUMBER	NOMENCLATURE 1234567	EFF CODE	QTY PER ASSY
02- -25C	BCREF7611		..SWITCH-LIGHTED PUSHBUTTON IND (ON/OFF) (851-30768-2024 T/W 851-30768-803, OR -813 SWITCHGUARD I/W BCREF7611 T/W 433-100-004 SWITCHGUARD) (V81590) (433-673-1001-1024) (S2) (SPEC S231T290-1024) (OPT ITEM 25)	MA,NA	1
-25D	BCREF7611		..SWITCH-LIGHTED PUSHBUTTON IND (ON/OFF) (851-30768-2024 T/W 851-30768-803 OR -813 SWITCHGUARD I/W BCREF7611 T/W 433-100-004 SWITCHGUARD) (V81590) (433-673-1001-1024) (S2) (SPEC S231T290-1024) (OPT ITEM 25B)	RA,SA TA,UA	1

24-33-71

 ILLUSTRATED PARTS LIST
 01.1 Page 1040
 Jul 01/03



BOEING
COMPONENT
MAINTENANCE MANUAL

FIG. & ITEM	PART NO.	AIRLINE PART NUMBER	NOMENCLATURE 1234567	EFF CODE	QTY PER ASSY
02- -25E	BCREF7611		..SWITCH-LIGHTED PUSHBUTTON IND (ON/OFF) (V81590) (433-673-1001-1024) (S2) (851-30768-2024 T/W 851-30768-803, -813, OR 433-100-004 SWITCHGUARD I/W BCREF7611, 851-30768-3024, BCREFA0510, OR 851-35100-5024 WITH 433-100-004 SWITCHGUARD) (SPEC S231T290-1024) (USE WITH CONFIG "D" MASTER MODULE. SEE REPAIR FOR ADDITIONAL INFORMATION) (OPT ITEMS 25F,25G,25H, 25J)	XA, AB-EB	1
-25F	BCREFA0510		..SWITCH-LIGHTED PUSHBUTTON IND (ON/OFF) (V81590) (433-673-1004-4024) (S2) (851-30768-2024 T/W 851-30768-803, -813, OR 433-100-004 SWITCHGUARD I/W BCREF7611, 851-30768-3024, BCREFA0510, OR 851-35100-5024 WITH 433-100-004 SWITCHGUARD) (SPEC S231T290-4024) (USE WITH CONFIG "D" MASTER MODULE. SEE REPAIR FOR ADDITIONAL INFORMATION) (OPT ITEMS 25E,25G,25H, 25J)	XA, AB-EB	1

24-33-71

ILLUSTRATED PARTS LIST
01.1 Page 1041
Jul 01/03

FIG. & ITEM	PART NO.	AIRLINE PART NUMBER	NOMENCLATURE 1234567	EFF CODE	QTY PER ASSY
02- -25G	851-30768-2024		..SWITCH-LIGHTED PUSHBUTTON IND (ON/OFF) (V96182) (S2) (851-30768-2024 T/W 851-30768-803, -813, OR 433-100-004 SWITCHGUARD I/W BCREF7611, 851-30768-3024, BCREFA0510, OR 851-35100-5024 WITH 433-100-004 SWITCHGUARD) (SPEC S231T290-2024) (OPT ITEMS 25E,25F,25H, 25J)	XA, AB-EB	1
-25H	851-30768-3024		..SWITCH-LIGHTED PUSHBUTTON IND (ON/OFF) (V96182) (S2) (851-30768-2024 T/W 851-30768-803, -813, OR 433-100-004 SWITCHGUARD I/W BCREF7611, 851-30768-3024, BCREFA0510, OR 851-35100-5024 WITH 433-100-004 SWITCHGUARD) (SPEC S231T290-3024) (OPT ITEMS 25E,25F,25G, 25J)	XA, AB-EB	1

24-33-71

 ILLUSTRATED PARTS LIST
 01.1 Page 1042
 Jul 01/03

 **BOEING**
COMPONENT
MAINTENANCE MANUAL

FIG. & ITEM	PART NO.	AIRLINE PART NUMBER	NOMENCLATURE 1234567	EFF CODE	QTY PER ASSY
02- -25J	851-35100-5024		..SWITCH-LIGHTED PUSHBUTTON IND (ON/OFF) (V96182) (S2) (851-30768-2024 T/W 851-30768-803, -813, OR 433-100-004 SWITCHGUARD I/W BCRE7611, 851-30768-3024, BCREFA0510, OR 851-35100-5024 WITH 433-100-004 SWITCHGUARD) (SPEC S231T290-5024) (OPT ITEMS 25E,25F,25G, 25H)	XA, AB-EB	1
30	851-30768-803		..GUARD-SWITCH (V96182) (SPEC S231T290-803) (OPT ITEM 30A)	MA-QA VA,WA	1
-30A	851-30768-813		..GUARD-SWITCH (433-100-004 MAY REPLACE 851-30768-813 EXCEPT 851-30768-813 OPTIONAL TO 433-100-004 FOR NA213NA214) (V96182) (SPEC S231T290-813) (OPT ITEM 30)	MA-QA VA,WA	1
-30B	433-100-004		..GUARD-SWITCH (433-100-004 MAY REPLACE 851-30768-813 EXCEPT 851-30768-813 OPTIONAL TO 433-100-004 FOR NA213NA21) (V81590) (SPEC S231T290-823)	RA-UA, XA, AB-CB	1

24-33-71

FIG. & ITEM	PART NO.	AIRLINE PART NUMBER	NOMENCLATURE 1234567	EFF CODE	QTY PER ASSY
02-35	BCREF6118		..LIGHT ASSY-DISCH IND (V81590) (434-674-1005-1195) (L2) (SPEC S231T300-1195)	MA-PA RA,VA XA,DB EB	1
35A	BCREF6430		..LIGHT ASSY-MAIN BAT DISCH IND (V81590) (434-674-1005-1291) (L2) (SPEC S231T300-1291)	QA,SA WA,AB	1
-35B	BCREF8559		.LIGHT ASSY-DISCH IND (V81590) (434-674-1031-2195) (L2) (SPEC S231T300-2195) (OPT ITEM 35D)	TA,BB	1
-35C	BCREF8593		..LIGHT ASSY-DISCH IND (V81590) (434-674-1031-2291) (L2) (SPEC S231T300-2291) (OPT ITEM 35E)	UA,CB	1
-35D	BCREF6118		..LIGHT ASSY-DISCH IND (V81590) (434-674-1005-1195) (L2) (SPEC S231T300-1195) (OPT ITEM 35B)	TA,BB	1

24-33-71

 ILLUSTRATED PARTS LIST
 01.1 Page 1044
 Jul 01/03

FIG. & ITEM	PART NO.	AIRLINE PART NUMBER	NOMENCLATURE 1234567	EFF CODE	QTY PER ASSY
02- -35E	BCREF6430		..LIGHT ASSY-DISCH IND (V81590) (434-674-1005-1291) (L2) (SPEC S231T300-1291) (OPT ITEM 35C)	UA,CB	1
40	BCREF6117		..LIGHT ASSY-OFF IND (V81590) (434-674-1005-1194) (L1) (SPEC S231T300-1194)	MA-SA VA-XA AB,DB EB	1
-40A	BCREF8558		..LIGHT ASSY-DISCH IND (V81590) (434-674-1031-2194) (L1) (SPEC S231T300-2194) (OPT ITEM 40B)	TA,UA BB,CB	1
-40B	BCREF6117		..LIGHT ASSY-DISCH IND (V81590) (434-674-1005-1194) (L1) (SPEC S231T300-1194) (OPT ITEM 40A)	TA,UA BB,CB	1
45	BCREF6431		..LIGHT ASSY-APU BAT DISCH IND (V81590) (434-674-1005-1292) (L3) (SPEC S231T300-1292)	QA,SA WA,AB	1

24-33-71

ILLUSTRATED PARTS LIST
01.1 Page 1045
Jul 01/03

FIG. & ITEM	PART NO.	AIRLINE PART NUMBER	NOMENCLATURE 1234567	EFF CODE	QTY PER ASSY
02- -45A	BCREF8594		..LIGHT ASSY-DISCH IND (V81590) (434-674-1031-2292) (L3) (SPEC S231T300-2292) (OPT ITEM 45B)	UA,CB	1
-45B	BCREF6431		..LIGHT ASSY-DISCH IND (V81590) (434-674-1005-1292) (L3) (SPEC S231T300-1292) (OPT ITEM 45A)	UA,CB	1
50	AC45-0015-1		..SWITCH-ROTARY (V91812) (S1) (OPT ITEM 50B)	MA,NA DB,EB	1
-50A	AC45-0036		..SWITCH-ROTARY (V91812) (S1) (OPT ITEM 50C)	PA-VA XA, AB-CB	1
-50B	AC45-0015-2		..SWITCH-ROTARY (V91812) (S1) (OPT ITEM 50)	MA,NA DB,EB	1
-50C	AC45-0036-1		..SWITCH-ROTARY (V91812) (S1) (OPT ITEM 50A)	PA-VA XA, AB-CB	1
55	233N3211-48		..BASEPLATE ASSY	MA-PA RA,TA VA,XA BB,DB EB	1

24-33-71

 ILLUSTRATED PARTS LIST
 01.1 Page 1046
 Jul 01/03

FIG. & ITEM	PART NO.	AIRLINE PART NUMBER	NOMENCLATURE 1234567	EFF CODE	QTY PER ASSY
02- -55A	233N3211-49		..BASEPLATE ASSY	QA,SA UA,WA AB,CB	1
60	NAS514P632-5		ATTACHING PARTS ..SCREW -----*-----		3
65A	PFSC35-38ASEMB		...STUD ASSY (V72794) (SPEC BACS21DX1B)		4
70	SF6G6CBB5D		...NUT (V12324) (SPEC BACN10PA06-6)		2
75	BACP10U0225N		...PANEL		1
80	NAS1801-06-5		..SCREW		3
85	MS35338-41		..WASHER		3
90	69B46200-17		..STANDOFF		3
95	NAS1801-04-5		..SCREW		3
100	K19798-04		..NUT (V15653) (SPEC BACN10NW1) (OPT RMA4812-160-40 (V72962)) (OPT 293162 (V60119))		3
105	BACC45FN20-41P		..CONNECTOR (J2)	MA-VA XA, AB-EB	1
110	233N3250-5		..BRACKET-SPRT		1
-115	233N3211-9		..WIRE BUNDLE ASSY	MA-PA RA,TA VA,XA BB,DB EB	1

24-33-71

FIG. & ITEM	PART NO.	AIRLINE PART NUMBER	NOMENCLATURE	EFF CODE	QTY PER ASSY
02-115A	233N3211-18		1234567 ..WIRE BUNDLE ASSY	QA,SA UA,WA AB,CB	1

- Item Not Illustrated

24-33-71